

Activity Name	Original Duration	Planned Start	Planned Finish	2011				2012				2013				2014				2015				2016	
				Q3	Q4	Q1	Q2	Q3	Q4	Q1	Q2	Q3	Q4	Q1	Q2	Q3	Q4	Q1	Q2	Q3	Q4	Q1	Q2		
HY/2009/15 - CWB TUNNEL (CBTS SECTION)																									
SUBMISSIONS COMPLYING WITH EPs																									
EM&A Manual (rely on the Master EP's submission EP-364/2009/A Condition 2.9)																									
Baseline Monitoring Report (rely on the Master EP's submission EP-364/2009 Condition 3.3)																									
Monthly EM&A (rely on the masters EP's Submission, EP-364/2009/A Condition 3.4)																									
A dedicated website (rely on the master EP's submission, EP-364/2009/A Condition 4.2)																									
Management organization of main construction companies (FEP Condition 2.6)	1d	02-Oct-10	02-Oct-10																						
Work Schedule (FEP Condition 2.7)	1d	27-Oct-10	27-Oct-10																						
Location Plan (FEP Condition 2.8)	1d	27-Oct-10	27-Oct-10																						
Noise Management plan (FEP Condition 2.9)	1d	27-Oct-10	27-Oct-10																						
Landscape plan (FEP condition 2.10)	1d	31-Jan-11	31-Jan-11																						
EAST VENTILATION ADIT																									
CCT @ Portion 1, 2, 4, 6, 22	1315d	27-Sep-10	03-May-14																						
EV Adit @ Portion 4-Advance Works	526d	27-Sep-10	05-Mar-12																						
EV Adit Portion 1, 2, 6, 22	26d	22-Dec-11	16-Jan-12																						
EV Adit-based on Conforming Design	323d	15-Feb-12	02-Jan-13																						
TCBR1E (TS1 Area)																									
Diaphragm Wall Construction (incl. SI, & tests after completion)	107d	26-Apr-11	10-Aug-11																						
Excavation & Lateral Support, ELS	99d	16-Jul-11	22-Oct-11																						
Cut & Cover Tunnel Construction (incl. backfill)	78d	22-Oct-11	07-Jan-12																						
OHVD and Cable Trough (access from Portion 22)	76d	18-Dec-13	03-Mar-14																						
TCBR2 + TCBR3 (TS2 Area)																									
Diaphragm Wall Construction	118d	06-Jul-12	31-Oct-12																						
Excavation & Lateral Support, ELS	248d	06-Jul-12	10-Mar-13																						
Cut & Cover Tunnel Construction	164d	11-Mar-13	21-Aug-13																						
OHVD Cable Trough (Access from Portion 22)	150d	05-Aug-13	01-Jan-14																						
TCBR1W (TS4 Area)																									
Diaphragm Wall Construction	148d	28-Jun-11	22-Nov-11																						
Excavation & Lateral Support, ELS	319d	26-Jun-11	11-May-12																						
Landing Steps - Demolition/Reconstruct as footpath	40d	28-Jun-11	23-Aug-11																						

- ◆ Milestone
- ◆ Milestone
- ▨ Remaining Work
- ▨ Critical Remaining Work
- ▨ Actual Work

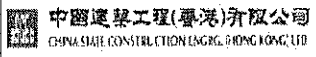
1 of 2

China State Construction Engineering (Hong Kong) Ltd.

Contract No. HY/2009/15 - Central Wan Chai By Pass - Tunnel

(CBTS Section)

Prepared by William Caluza			
Date	Revision	Checked	Approved
14-Mar-11	Revision C	ST	KL
	File: GC01a		
	(Layout:HY/2009/15: CWB - Summary)		



Activity Name	Original Duration	Planned Start	Planned Finish	2011					2012				2013				2014				2015				2016	
				Q3	Q4	Q1	Q2	Q3	Q4	Q1	Q2	Q3	Q4	Q1	Q2	Q3	Q4	Q1	Q2	Q3	Q4	Q1	Q2	Q3	Q4	Q1
Rock Excavation	235d	25-Apr-12	15-Dec-12																							
ME4-Diaphragm Wall	114d	10-May-12	19-Oct-12																							
AS Logistics Area for Mined Tunneling Works	174d	01-Jun-12	07-Feb-13																							
ME4-ELS Works	212d	01-Jun-12	02-Apr-13																							
SCL Entrusted Works	291d	18-Jul-12	08-Sep-13																							
Cut & Cover Tunnel Construction (w/o TS4 +)	111d	17-Dec-12	06-Apr-13																							
ME4-RC Structure	146d	28-Jan-13	21-Aug-13																							
OHVD and Cable Trough (Access from TZ5/TPCWAE/TPCWAW)	180d	17-Jun-13	13-Dec-13																							
MINED TUNNEL																										
CHT Protection Works @ location A, B, C	342d	27-Sep-10	01-Feb-12																							
Tunnel works from West Portal (access from TPCWAE& TZ5)	418d	12-Mar-12	30-Oct-13																							
Tunnel Works from East Portal (Access from TS4 Area)	214d	30-Mar-12	01-Feb-13																							
Tunnel OHVD & Cable Trough	384d	02-Dec-13	22-May-15																							
TPCWAE																										
Drainage Diversion works along Hung Hing Road (Portion 19)	176d	15-Oct-10	24-Jun-11																							
Diaphragm Wall Construction	147d	20-May-11	13-Oct-11																							
Excavation & Lateral Support, ELS	421d	20-May-11	13-Jul-12																							
Rock Excavation	208d	12-Mar-12	03-Oct-12																							
AS Logistics Area for Mined Tunneling works	342d	12-May-12	18-Apr-13																							
Cut & Cover Tunnel Construction	130d	28-Jan-13	06-Jun-13																							
OHVD and Cable Trough (Access from TZ5/TPCWAW)	182d	18-Feb-15	18-Aug-15																							
TPCWAW & PORTION 11																										
Diaphragm Wall Construction + Portion 11	222d	25-Oct-13	03-Jun-14																							
Excavation & Lateral Support, ELS	478d	25-Oct-13	14-Feb-15																							
Cut & Cover Tunnel Construction	143d	30-Dec-14	21-May-15																							
OHVD and Cable Trough Installation (Access from Portion 11)	235d	22-May-15	11-Jan-16																							

- ◆ Milestone
- ◆ Milestone
- ▨ Remaining Work
- ▨ Critical Remaining Work
- ▨ Actual Work

2 of 2

China State Construction Engineering (Hong Kong) Ltd.
Contract No. HY/2009/15 - Central Wan Chai By Pass - Tunnel
(CBTS Section)

Prepared by William Caluza			
Date	Revision	Checked	Approved
14-Mar-11	Revision C	ST	KL
	File: 0001a		
	(Layout: HY/2009/15: CWB - Summary)		

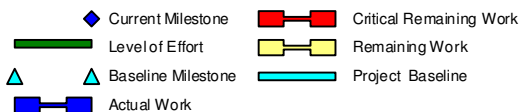


HY/2009/18 Central - Wan Chai Bypass (Central Interchange)



TASK filters: 3 Months, Not HL.

Activity ID	Activity Name	Original Durati...	Start	Finish	Total Float	2012				
						Aug	Sep	Oct	Nov	
Update 2012-08-20 CWB - Central Interchange (2012-07-16) Revised DWP R3										
PRELIMINARIES										
Access Dates & Milestones										
Portion Possession Dates										
1304	Portion VI Available (DAY-783)	0	12-Nov-12*		0					
Submissions & Approvals										
Programme										
1689	Programme - Engineer Review and Approve Revised Detailed Works Programme and Narrative Statement	28	18-Jul-12 A	08-Aug-12 A						
Specified Plans										
MTRC Impact Assessment Report										
1501	Resubmit MTRC Impact Assessment Report - Phase 2	12	19-Feb-12 A	13-Aug-12 A						
1553	MTRC Impact Assessment Report - Engineer / MTRC Review & Comment (MYS)	12	01-Jun-12 A	20-Jul-12 A						
1669	Resubmit MTRC Impact Assessment Report - Cut & Cover Tunnel	28	03-Jun-12 A	17-Aug-12 A						
1504	MTRC Impact Assessment Report - Engineer / MTRC Review & Comment (Phase 2)	12	14-Aug-12 A	25-Aug-12	10					
1670	MTRC Impact Assessment Report - Engineer / MTRC Review & Comment (Cut & Cover)	12	18-Aug-12 A	29-Aug-12	57					
Traffic										
Temporary Traffic Management										



Leighton Contractors (Asia) Limited Programme Update 23 (Aug 2012) THREE MONTH ROLLING

Project ID: U023
 Baseline: DCP4-2
 Layout: Update Three Month Rolling U023
 Page 1 of 12

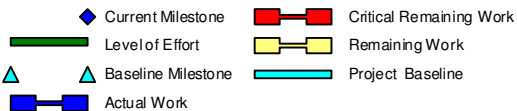
U023 Programme Update 23 (Aug 2012)			
Date	Revision	Checked	Approv...
21-Aug-12	U023	RC	RW
21-Jul-12	U022	RC	RW

HY/2009/18 Central - Wan Chai Bypass (Central Interchange)



TASK filters: 3 Months, Not HL.

Activity ID	Activity Name	Original Durati...	Start	Finish	Total Float	2012				
						Aug	Sep	Oct	Nov	
1637	TTM - Engineer / 18th TMLG Review & Approve	19	18-Jul-12 A	24-Jul-12 A						
1638	TTM - Revise & Resubmit	18	25-Jul-12 A	22-Aug-12 A						
1691	TTM - Engineer / 19th TMLG Review & Approve	19	20-Aug-12	07-Sep-12	308					
1692	TTM - Revise & Resubmit	18	08-Sep-12	25-Sep-12	308					
1697	TTM - Engineer / 20th TMLG Review & Approve	19	26-Sep-12	14-Oct-12	308					
1700	TTM - Revise & Resubmit	18	15-Oct-12	01-Nov-12	308					
Design										
Cost Saving Design (Contractor's Alternative Design)										
3728	CSD - Engineer Review & Approve Alternative Design (OHVD)	28	27-Jan-11 A	25-Aug-12	1481					
1617	BP - Pre-bored H Pile Scheme Design Engineer Review & Approval	28	03-May-12 A	25-Aug-12	389					
1642	BP - Pre-bored H Pile Scheme Design Engineer Review & Approval	28	21-Jun-12 A	25-Aug-12	389					
1701	BP - Prepare & Submit Revised Pre-bored H Pile Detailed Design	52	21-Jun-12 A	16-Aug-12 A						
1763	BP - Revised Pre-bored H Pile Scheme Design Engineer Review & Approval	28	17-Aug-12 A	13-Sep-12	370					
Temporary Works Design										
Bridge / Viaduct Temporary Works										
3690	Bridge/Viaduct - Scaffolding Design Engineer Review & Comment	28	16-Jun-12 A	26-Aug-12	527					
1643	Bridge/Viaduct - ELS Design Engineer Review & Comment	28	16-Jun-12 A	20-Aug-12 A						



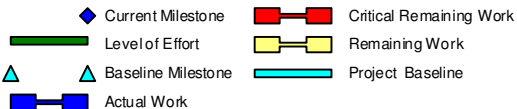
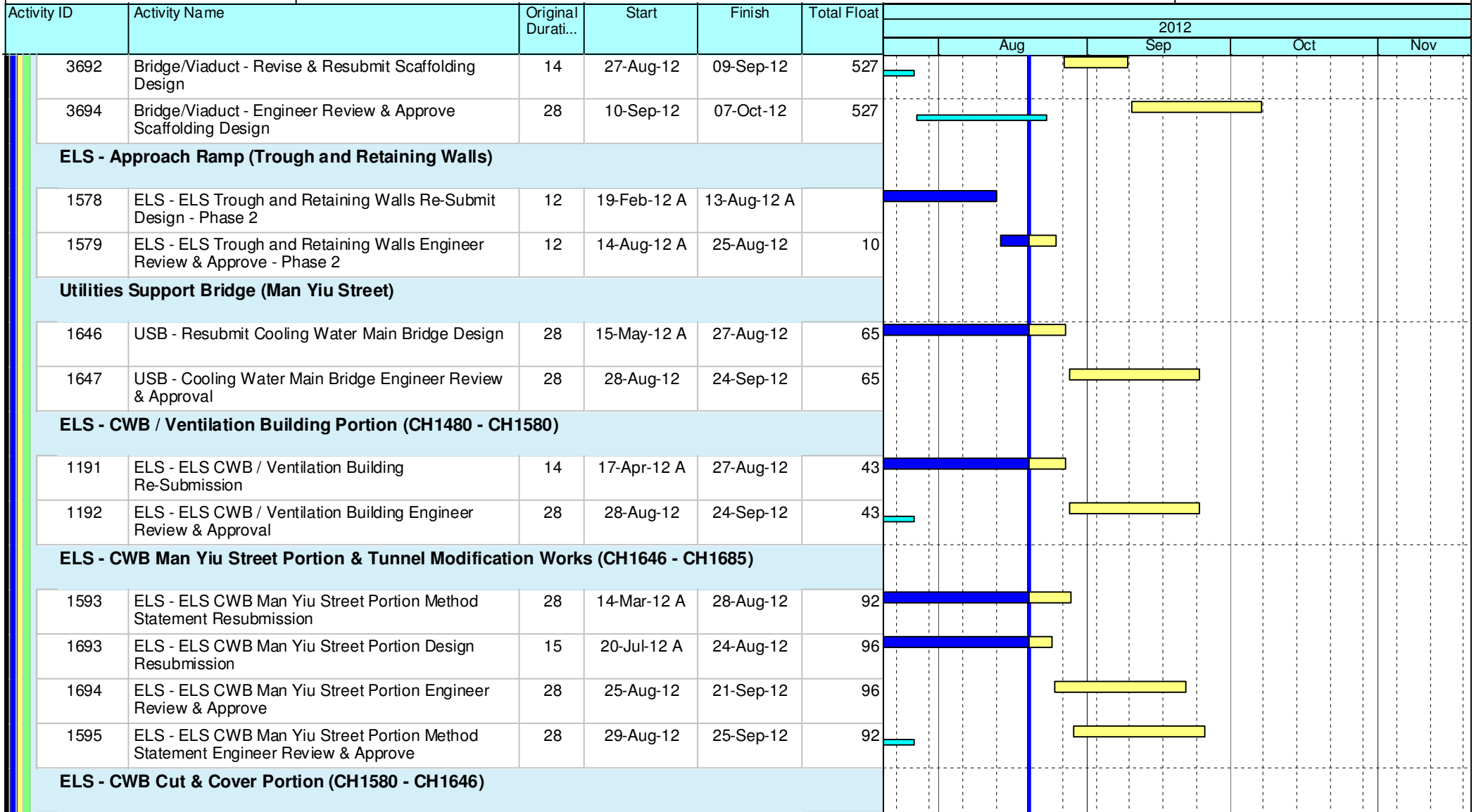
Leighton Contractors (Asia) Limited Programme Update 23 (Aug 2012) THREE MONTH ROLLING

Project ID: U023
 Baseline: DCP4-2
 Layout: Update Three Month Rolling U023
 Page 2 of 12

U023 Programme Update 23 (Aug 2012)			
Date	Revision	Checked	Approv...
21-Aug-12	U023	RC	RW
21-Jul-12	U022	RC	RW

HY/2009/18 Central - Wan Chai Bypass (Central Interchange)

TASK filters: 3 Months, Not HL.



Leighton Contractors (Asia) Limited Programme Update 23 (Aug 2012) THREE MONTH ROLLING

Project ID: U023
 Baseline: DCP4-2
 Layout: Update Three Month Rolling U023
 Page 3 of 12

U023 Programme Update 23 (Aug 2012)			
Date	Revision	Checked	Approv...
21-Aug-12	U023	RC	RW
21-Jul-12	U022	RC	RW

HY/2009/18 Central - Wan Chai Bypass (Central Interchange)



TASK filters: 3 Months, Not HL.

Activity ID	Activity Name	Original Durati...	Start	Finish	Total Float	2012				
						Aug	Sep	Oct	Nov	
1661	ELS - ELS CWB CH1580-CH1646 Portion Re-submit Design	15	03-Jun-12 A	17-Aug-12 A						
1662	ELS - ELS CWB CH1580-CH1646 Portion Re-submit Design Engineer Review & Comment	12	18-Aug-12 A	29-Aug-12	92					
ELS - CWB CRIII Portion (CH1685 - CH1704)										
1695	ELS - ELS CRIII Portion Resubmit Design	28	20-Jul-12 A	24-Aug-12	241					
1696	ELS - ELS CRIII Portion Design Engineer Review & Approve	28	25-Aug-12	21-Sep-12	241					
ELS - Retaining Wall										
1169	ELS - ELS Retaining Wall VI Portion Prepare Design	52	20-Aug-12	10-Oct-12	548					
1170	ELS - ELS Retaining Wall VI Portion Prepare Method Statement	15	13-Oct-12	27-Oct-12	548					
1171	ELS - ELS Retaining Wall VI Portion ICE Check & Endorse	15	28-Oct-12	11-Nov-12	548					
1173	ELS - ELS Retaining Wall VI Portion Engineer Review & Approve Design	28	12-Nov-12	09-Dec-12	548					
Procurement, Shop Drawing, Manufacture & Delivery										
Excavation & Lateral Support										
1172	ELS - Wailing & Shoring Material Sourcing, Procurement and Delivery (Retaining Wall)	60	11-Oct-12	09-Dec-12	548					
1126	ELS - Wailing & Shoring Material Sourcing, Procurement and Delivery (Man Yiu St.)	60	30-Oct-12	28-Dec-12	13					
Cut & Cover Tunnel										
3812	Falsework and Formwork for Cut & Cover Tunnel Shop Drawing	28	31-Aug-12	27-Sep-12	25					
3814	Falsework and Formwork for Cut & Cover Tunnel Material Procurment	28	28-Sep-12	25-Oct-12	25					

- Current Milestone
- Critical Remaining Work
- Level of Effort
- Remaining Work
- Baseline Milestone
- Project Baseline
- Actual Work

Leighton Contractors (Asia) Limited Programme Update 23 (Aug 2012) THREE MONTH ROLLING

Project ID: U023
 Baseline: DCP4-2
 Layout: Update Three Month Rolling U023
 Page 4 of 12

U023 Programme Update 23 (Aug 2012)			
Date	Revision	Checked	Approv...
21-Aug-12	U023	RC	RW
21-Jul-12	U022	RC	RW

Data Date: 20-Aug-12
 Print Date: 25-Aug-12

HY/2009/18 Central - Wan Chai Bypass (Central Interchange)



TASK filters: 3 Months, Not HL.

Activity ID	Activity Name	Original Durati...	Start	Finish	Total Float	2012				
						Aug	Sep	Oct	Nov	
3810	Falsework and Formwork for Cut & Cover Tunnel Off-site Fabrication	24	26-Oct-12	18-Nov-12	25					
Overhead Ventilation Duct										
1660	OHVD - Mobilization & Yard Preparation & Trial Panel	30	15-Jun-12 A	20-Aug-12 A						
3815	OHVD - Manufacture Precast Panels (~150#)	76	20-Aug-12	03-Nov-12	39					
1627	OHVD - Manufacture Precast Panels (~450#)	92	04-Nov-12	03-Feb-13	39					
Bored Piling										
3820	BP - Tender / Award Pre-bored H Pile Subcontract	30	20-Jun-12 A	31-Aug-12	791					
Post-tensioning										
3830	PT - Tender / Award Bridge Post-tensioning Subcontract	60	03-Nov-12	01-Jan-13	334					
Bridge Bearings										
3843	BEAR - Prepare & Submit Design & Particulars of Bearings	30	03-Nov-12	02-Dec-12	334					
Utilities Support Bridge (Man Yiu Street)										
3923	USB - Utilities Support Bridge Manufacture and Delivery, Mobilization	57	08-Jun-12 A	03-Oct-12	56					
Establishment, Mobilisation & Advanced Works										
Instrumentation and Monitoring										
3012	INS - Portion VI Install Instrumentation	54	12-Nov-12	16-Jan-13	449					
SECTION 3A - ALL TUNNEL WORKS IN PORTION IIIB										

- ◆ Current Milestone
- Critical Remaining Work
- ▬ Level of Effort
- ▬ Remaining Work
- ▲ Baseline Milestone
- ▬ Project Baseline
- ▬ Actual Work

Leighton Contractors (Asia) Limited Programme Update 23 (Aug 2012) THREE MONTH ROLLING

Project ID: U023
 Baseline: DCP4-2
 Layout: Update Three Month Rolling U023
 Page 5 of 12

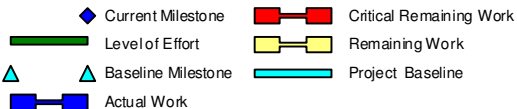
U023 Programme Update 23 (Aug 2012)			
Date	Revision	Checked	Approv...
21-Aug-12	U023	RC	RW
21-Jul-12	U022	RC	RW

HY/2009/18 Central - Wan Chai Bypass (Central Interchange)



TASK filters: 3 Months, Not HL.

Activity ID	Activity Name	Original Durati...	Start	Finish	Total Float	2012					
						Aug	Sep	Oct	Nov		
CWB Tunnel - CH1704 to CH1825											
CWB Tunnel Internal Works											
1410	1704-1825 - Drill & Fix Rebar	7	15-Oct-12	22-Oct-12	1236						
CWB Tunnel - CH1685 to CH1704											
CWB Tunnel Structure											
1340	1685-1695 - Construct D-Wall Barrettes	38	26-Apr-12 A	29-Aug-12	89						
1342	1685-1704 - Sonic Test, Interface Core Test & Full Core Test	24	11-Jul-12 A	07-Sep-12	194						
1635	1685-1695 - Construct D-Wall Barrettes (W1D34)	17	16-Jul-12 A	15-Aug-12 A							
1197	1685-1695 - Construct D-Wall Barrettes (W2D33)	18	20-Jul-12 A	07-Aug-12 A							
1634	1685-1695 - Construct D-Wall Barrettes (BC20)	18	08-Aug-12 A	29-Aug-12	190						
SECTION 3B - ALL TUNNEL WORKS IN PORTION IIIC											
CWB Tunnel - CH1825 to CH2600											
CWB Tunnel Internal Works											
1370	1825-2600 - Drill & Fix Rebar Ch2600-2300	50	01-Jun-12 A	18-Aug-12 A							
1733	1825-2600 - Drill & Fix Rebar Ch2300 - 2000	30	27-Aug-12	29-Sep-12	1189						
1380	1825-2600 - Prepare CJ Ch2600 - 2300	40	29-Aug-12	16-Oct-12	50						
1372	1825-2600 - Drill & Fix Rebar Ch2000 - 1825	10	03-Oct-12	13-Oct-12	1219						



Leighton Contractors (Asia) Limited Programme Update 23 (Aug 2012) THREE MONTH ROLLING

Project ID: U023
 Baseline: DCP4-2
 Layout: Update Three Month Rolling U023
 Page 6 of 12

U023 Programme Update 23 (Aug 2012)			
Date	Revision	Checked	Approv...
21-Aug-12	U023	RC	RW
21-Jul-12	U022	RC	RW

Data Date: 20-Aug-12
 Print Date: 25-Aug-12

HY/2009/18 Central - Wan Chai Bypass (Central Interchange)

TASK filters: 3 Months, Not HL.

Activity ID	Activity Name	Original Durati...	Start	Finish	Total Float	2012				
						Aug	Sep	Oct	Nov	
1744	1825-2600 - Prepare CJ Ch2300 - 2000	40	17-Oct-12	03-Dec-12	1177					
1390	1825-2600 - Erect Precast Slab & Stitching & Construct Kicker Ch2600 - 2300	86	12-Nov-12	01-Mar-13	29					
SECTION 4B - ALL TUNNEL WORKS IN PORTION IVC, IVD, IVE & IVF										
CWB Tunnel - CH1480 to CH1580										
CWB Tunnel Structure										
1382	1480-1580 - Breaking Unforeseeable Concrete Slab	19	03-Jul-12 A	24-Jul-12 A						
1676	1480-1580 - Erect 2nd Layer Strut (West)	21	15-Jul-12 A	01-Aug-12 A						
1420	1480-1580 - Excavate 1st Layer (East) - Remaining	19	25-Jul-12 A	09-Aug-12 A						
1673	1480-1580 - Erect 1st Layer Strut (East)	16	10-Aug-12 A	17-Aug-12 A						
1679	1480-1580 - Excavate 3rd Layer (West)	9	15-Aug-12 A	04-Sep-12	23					
1675	1480-1580 - Excavate 2nd Layer (East)	15	16-Aug-12 A	25-Aug-12	13					
1678	1480-1580 - Erect 2nd Layer Strut (East)	15	27-Aug-12	12-Sep-12	13					
1681	1480-1580 - Erect 3rd Layer Strut (West)	15	05-Sep-12	21-Sep-12	23					
1680	1480-1580 - Excavate 3rd Layer (East)	6	13-Sep-12	19-Sep-12	13					
1682	1480-1580 - Erect 3rd Layer Strut (East)	25	20-Sep-12	20-Oct-12	13					
1683	1480-1580 - Excavate 4th Layer (West)	13	22-Sep-12	09-Oct-12	23					
1684	1480-1580 - Erect 4th Layer Strut (West)	11	10-Oct-12	22-Oct-12	23					

- ◆ Current Milestone
- Critical Remaining Work
- Level of Effort
- Remaining Work
- ▲ Baseline Milestone
- Project Baseline
- Actual Work

Leighton Contractors (Asia) Limited Programme Update 23 (Aug 2012) THREE MONTH ROLLING

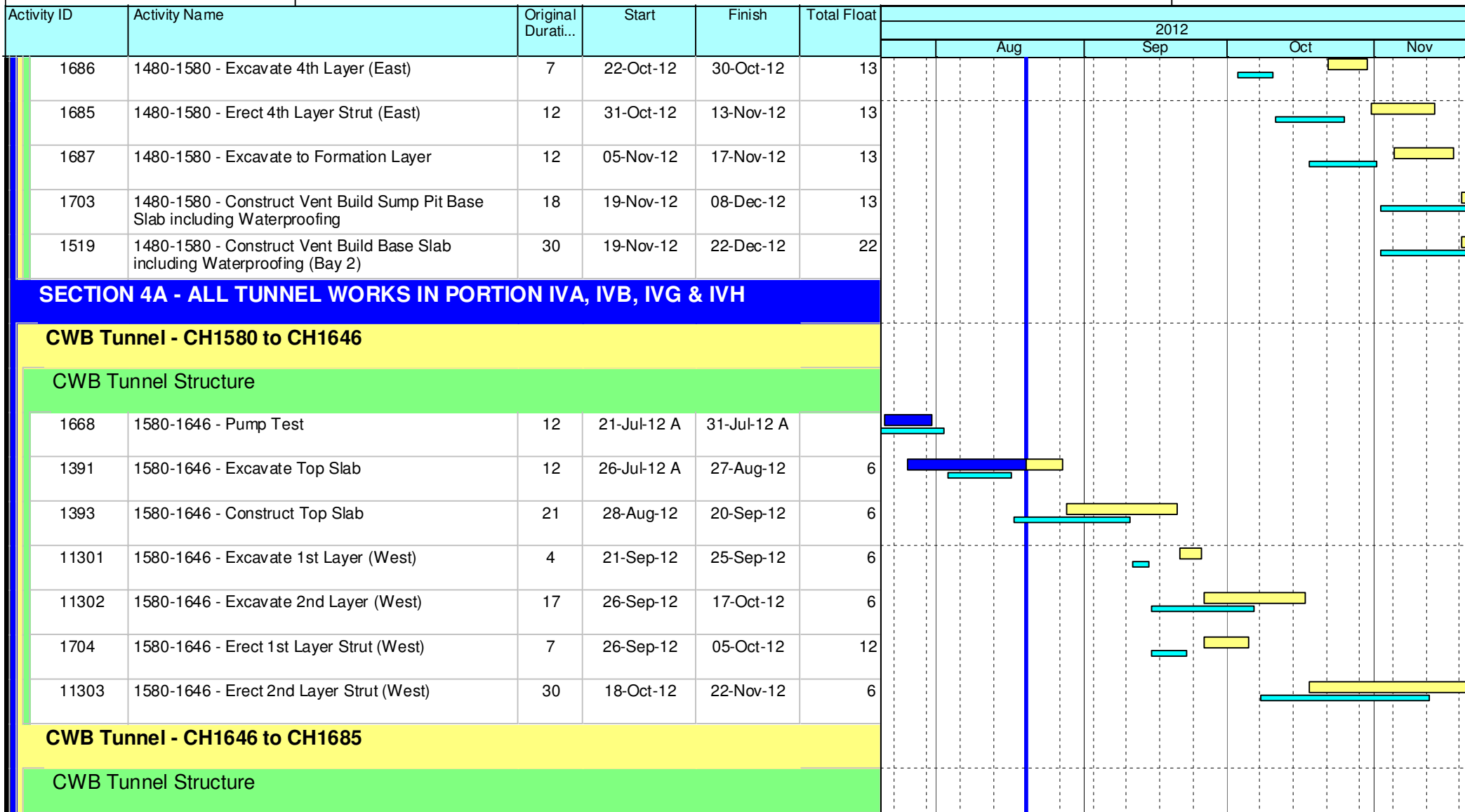
Project ID: U023
 Baseline: DCP4-2
 Layout: Update Three Month Rolling U023
 Page 7 of 12

U023 Programme Update 23 (Aug 2012)			
Date	Revision	Checked	Approv...
21-Aug-12	U023	RC	RW
21-Jul-12	U022	RC	RW

Data Date: 20-Aug-12
 Print Date: 25-Aug-12

HY/2009/18 Central - Wan Chai Bypass (Central Interchange)

TASK filters: 3 Months, Not HL.



- ◆ Current Milestone
- Critical Remaining Work
- ▬ Level of Effort
- ▬ Remaining Work
- ▲ Baseline Milestone
- ▬ Project Baseline
- ▬ Actual Work

Leighton Contractors (Asia) Limited Programme Update 23 (Aug 2012) THREE MONTH ROLLING

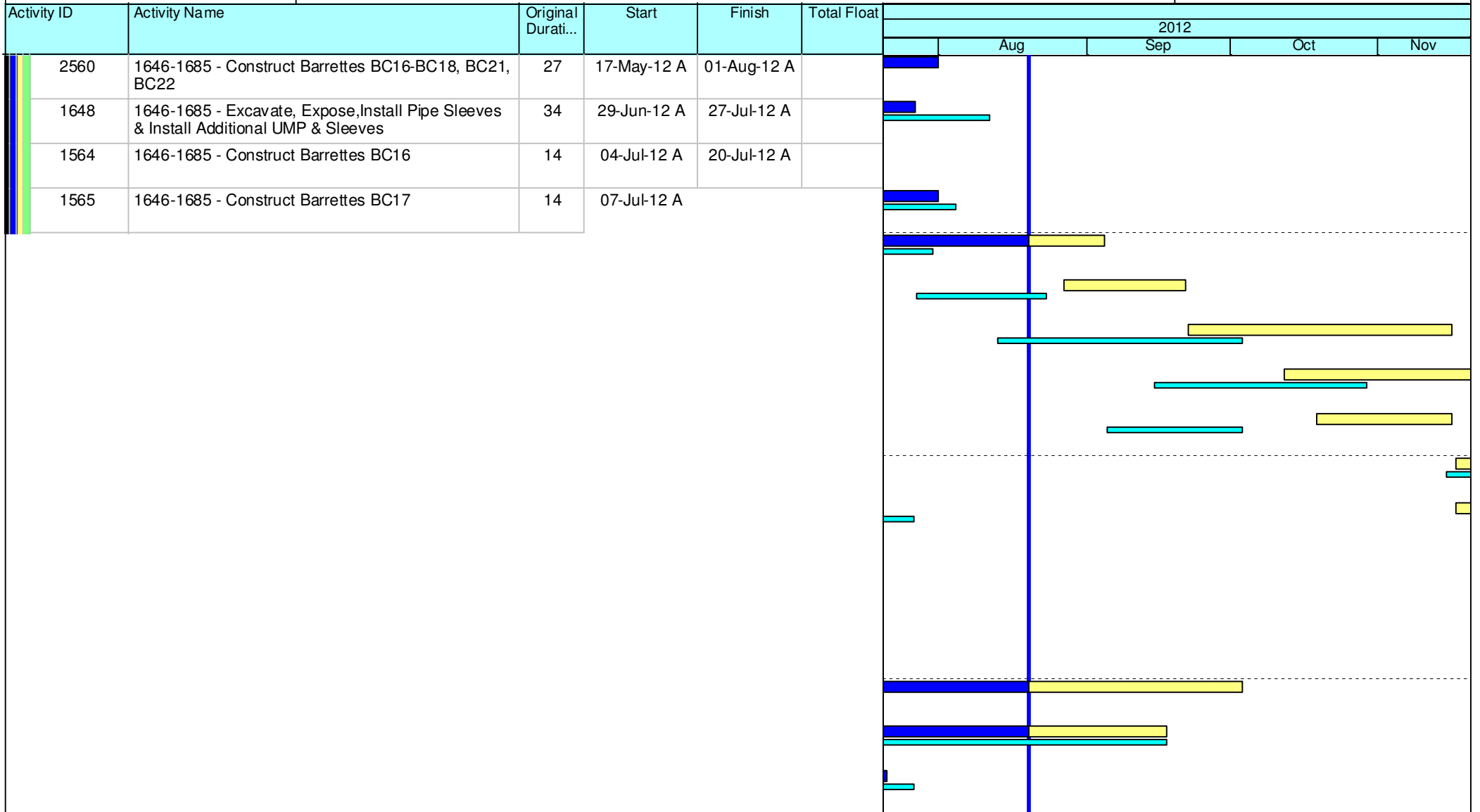
Project ID: U023
 Baseline: DCP4-2
 Layout: Update Three Month Rolling U023
 Page 8 of 12

U023 Programme Update 23 (Aug 2012)			
Date	Revision	Checked	Approv...
21-Aug-12	U023	RC	RW
21-Jul-12	U022	RC	RW

Data Date: 20-Aug-12
 Print Date: 25-Aug-12

HY/2009/18 Central - Wan Chai Bypass (Central Interchange)

TASK filters: 3 Months, Not HL.



- Current Milestone
- Critical Remaining Work
- Level of Effort
- Remaining Work
- Baseline Milestone
- Project Baseline
- Actual Work

Leighton Contractors (Asia) Limited Programme Update 23 (Aug 2012) THREE MONTH ROLLING

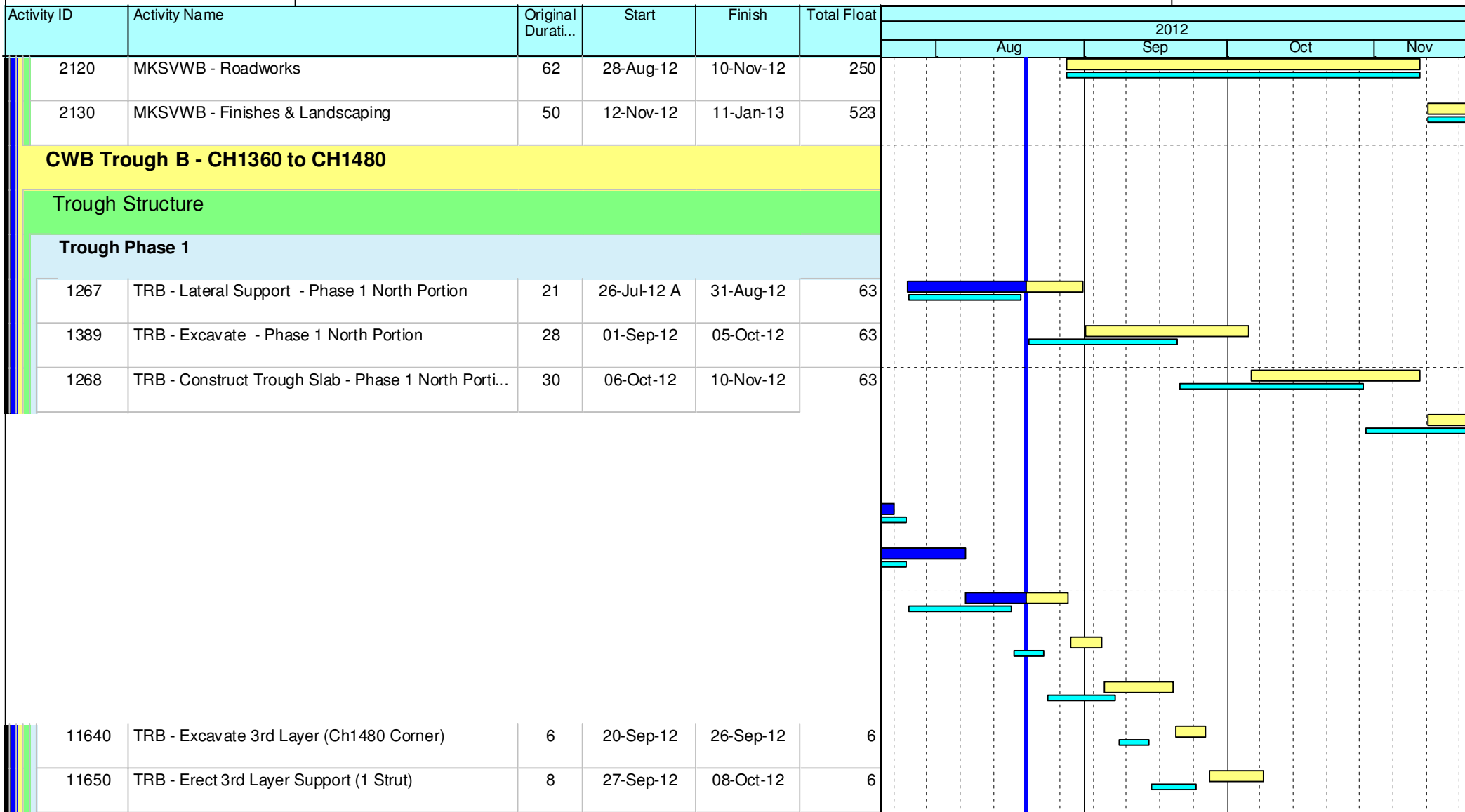
Project ID: U023
 Baseline: DCP4-2
 Layout: Update Three Month Rolling U023
 Page 9 of 12

U023 Programme Update 23 (Aug 2012)			
Date	Revision	Checked	Approv...
21-Aug-12	U023	RC	RW
21-Jul-12	U022	RC	RW

Data Date: 20-Aug-12
 Print Date: 25-Aug-12

HY/2009/18 Central - Wan Chai Bypass (Central Interchange)

TASK filters: 3 Months, Not HL.



- ◆ Current Milestone
- Critical Remaining Work
- Level of Effort
- Remaining Work
- ▲ Baseline Milestone
- Project Baseline
- Actual Work

Leighton Contractors (Asia) Limited Programme Update 23 (Aug 2012) THREE MONTH ROLLING

Project ID: U023
 Baseline: DCP4-2
 Layout: Update Three Month Rolling U023
 Page 10 of 12

U023 Programme Update 23 (Aug 2012)			
Date	Revision	Checked	Approv...
21-Aug-12	U023	RC	RW
21-Jul-12	U022	RC	RW

HY/2009/18 Central - Wan Chai Bypass (Central Interchange)

TASK filters: 3 Months, Not HL.

Activity ID	Activity Name	Original Durati...	Start	Finish	Total Float	2012				
						Aug	Sep	Oct	Nov	
11660	TRB - Excavate 4th Layer (Ch1480 Corner)	4	09-Oct-12	12-Oct-12	43					
1350	TRB - Erect 1st Layer Support (1 Strut)	8	09-Oct-12	17-Oct-12	6					
1360	TRB - Excavate 2nd Layer (Remaining)	12	18-Oct-12	01-Nov-12	6					
1385	TRB - Erect 2nd Layer Support (2 Struts)	13	02-Nov-12	16-Nov-12	6					
1394	TRB - Excavate 3rd Layer (Remaining)	15	17-Nov-12	04-Dec-12	6					
SECTION 6 - ALL WORKS IN PORTION VI										
Bridge B										
Preliminaries										
2159	BRB - Implement Localised TTA	12	12-Nov-12	24-Nov-12	272					
General Surface Works										
Formation & Roadworks - Man Kwong Street West Bound										
2502	MKSVIWB - Tree Transplanting / Felling	25	30-Jan-12 A	03-Oct-12	243					
2510	MKSVIWB - U/G Drainage & Ducts	50	17-Apr-12 A	17-Sep-12	225					
1576	MKSVIWB - Gas Main Installation	81	24-Apr-12 A	21-Jul-12 A						
2520	MKSVIWB - Roadworks	62	28-Aug-12	10-Nov-12	225					
2530	MKSVIWB - Finishes & Landscaping	50	12-Oct-12	10-Dec-12	225					
Retaining Wall G										

- ◆ Current Milestone
- Critical Remaining Work
- ▬ Level of Effort
- ▬ Remaining Work
- ▲ Baseline Milestone
- ▬ Project Baseline
- ▬ Actual Work

Leighton Contractors (Asia) Limited Programme Update 23 (Aug 2012) THREE MONTH ROLLING

Project ID: U023
 Baseline: DCP4-2
 Layout: Update Three Month Rolling U023
 Page 11 of 12








U023 Programme Update 23 (Aug 2012)			
Date	Revision	Checked	Approv...
21-Aug-12	U023	RC	RW
21-Jul-12	U022	RC	RW

Data Date: 20-Aug-12
 Print Date: 25-Aug-12

HY/2009/18 Central - Wan Chai Bypass (Central Interchange)

TASK filters: 3 Months, Not HL.

Activity ID	Activity Name	Original Durati...	Start	Finish	Total Float	2012				
						Aug	Sep	Oct	Nov	
2798	RWG - Implement Localised TTA on Finance Street	24	12-Nov-12	08-Dec-12	434					
Bridge A										
Preliminaries										
2250	BRA - Site Clearance	56	16-Jun-12 A	29-Sep-12	283					

-  Current Milestone
-  Critical Remaining Work
-  Level of Effort
-  Remaining Work
-  Baseline Milestone
-  Project Baseline
-  Actual Work

Leighton Contractors (Asia) Limited Programme Update 23 (Aug 2012) THREE MONTH ROLLING

Project ID: U023
 Baseline: DCP4-2
 Layout: Update Three Month Rolling U023
 Page 12 of 12

U023 Programme Update 23 (Aug 2012)			
Date	Revision	Checked	Approv...
21-Aug-12	U023	RC	RW
21-Jul-12	U022	RC	RW

Data Date: 20-Nov-12
 Print Date: 21-Nov-12

HY/2009/18 Central - Wan Chai Bypass (Central Interchange)

TASK filters: 3 Months, Not HL.



Activity ID	Activity Name	Original Duration	Start	Finish	Total Float	2012				2013	
						Nov		Dec		Jan	Feb
						1	2	1	2	1	2
Update 2012-11-20 CWB - Central Interchange (2012-08-31) Revised DWP R3											
PRELIMINARIES											
Access Dates & Milestones											
Portion Possession Dates											
1304	Portion VI Available (DAY-783)	0	12-Nov-12 A								
Submissions & Approvals											
Traffic											
Temporary Traffic Management											
1788	TTM - Engineer / 21th TMLG Review & Approve	19	18-Oct-12 A	07-Nov-12 A							
1789	TTM - Revise & Resubmit	18	08-Nov-12 A	07-Dec-12	272						
Design											
Cost Saving Design (Contractor's Alternative Design)											
1779	BP - Revised Pre-bored H Pile Scheme Design Engineer Review & Approval	28	11-Sep-12 A	21-Nov-12	334						
1782	BP - Pre-bored H Pile Design for Elevated Layby Engineer Review & Approval	28	15-Sep-12 A	21-Nov-12	839						
Temporary Works Design											
Bridge / Viaduct Temporary Works											
3690	Bridge/Viaduct - Scaffolding Design Engineer Review & Comment	28	16-Jun-12 A	22-Nov-12	439						

Current Milestone
 Level of Effort
 Baseline Milestone
 Actual Work
 Critical Remaining Work
 Remaining Work
 Project Baseline

Leighton Contractors (Asia) Limited Programme Update 26 (Nov 2012) THREE MONTH ROLLING

Project ID: U026
 Baseline: DCP4-4
 Layout: Update Three Month Rolling U026
 Page 1 of 12

U025 Programme Update 26 (Nov 2012)			
Date	Revision	Checked	Approv...
21-Nov-12	U026	EC	RW
21-Oct-12	U025	RC	RW

HY/2009/18 Central - Wan Chai Bypass (Central Interchange)



TASK filters: 3 Months, Not HL.

Activity ID	Activity Name	Original Duration	Start	Finish	Total Float	2012				2013		
						Nov		Dec		Jan	Feb	
						1	2	1	2	1	2	
3692	Bridge/Viaduct - Revise & Resubmit Scaffolding Design	14	23-Nov-12	06-Dec-12	439							
3694	Bridge/Viaduct - Engineer Review & Approve Scaffolding Design	28	07-Dec-12	03-Jan-13	439							
Utilities Support Bridge (Man Yiu Street)												
1647	USB - Cooling Water Main Bridge Engineer Review & Approval	28	17-Oct-12 A	04-Dec-12	26							
ELS - CWB / Ventilation Building Portion (CH1480 - CH1580)												
1191	ELS - ELS CWB / Ventilation Building Re-Submission	14	17-Apr-12 A	24-Nov-12	16							
1192	ELS - ELS CWB / Ventilation Building Engineer Review & Approval	14	25-Nov-12	08-Dec-12	16							
ELS - CWB Man Yiu Street Portion & Tunnel Modification Works (CH1646 - CH1685)												
1593	ELS - ELS CWB Man Yiu Street Portion Method Statement Resubmission	28	14-Mar-12 A	28-Nov-12	20							
1693	ELS - ELS CWB Man Yiu Street Portion Design Resubmission	15	20-Jul-12 A	24-Nov-12	24							
1694	ELS - ELS CWB Man Yiu Street Portion Engineer Review & Approve	21	25-Nov-12	15-Dec-12	24							
1595	ELS - ELS CWB Man Yiu Street Portion Method Statement Engineer Review & Approve	21	29-Nov-12	19-Dec-12	20							
ELS - CWB Cut & Cover Portion (CH1580 - CH1646)												
1776	ELS - ELS CWB CH1580-CH1646 Portion Re-submit Design	15	14-Sep-12 A	04-Dec-12	41							
1777	ELS - ELS CWB CH1580-CH1646 Portion Re-submit Design Engineer Review & Comment	12	05-Dec-12	16-Dec-12	41							
ELS - CWB CRIII Portion (CH1685 - CH1704)												
1695	ELS - ELS CRIII Portion Resubmit Design	28	20-Jul-12 A	12-Nov-12 A								

◆ Current Milestone ■ Critical Remaining Work
▬ Level of Effort ▬ Remaining Work
▲ Baseline Milestone ▬ Project Baseline
▬ Actual Work

Leighton Contractors (Asia) Limited Programme Update 26 (Nov 2012) THREE MONTH ROLLING

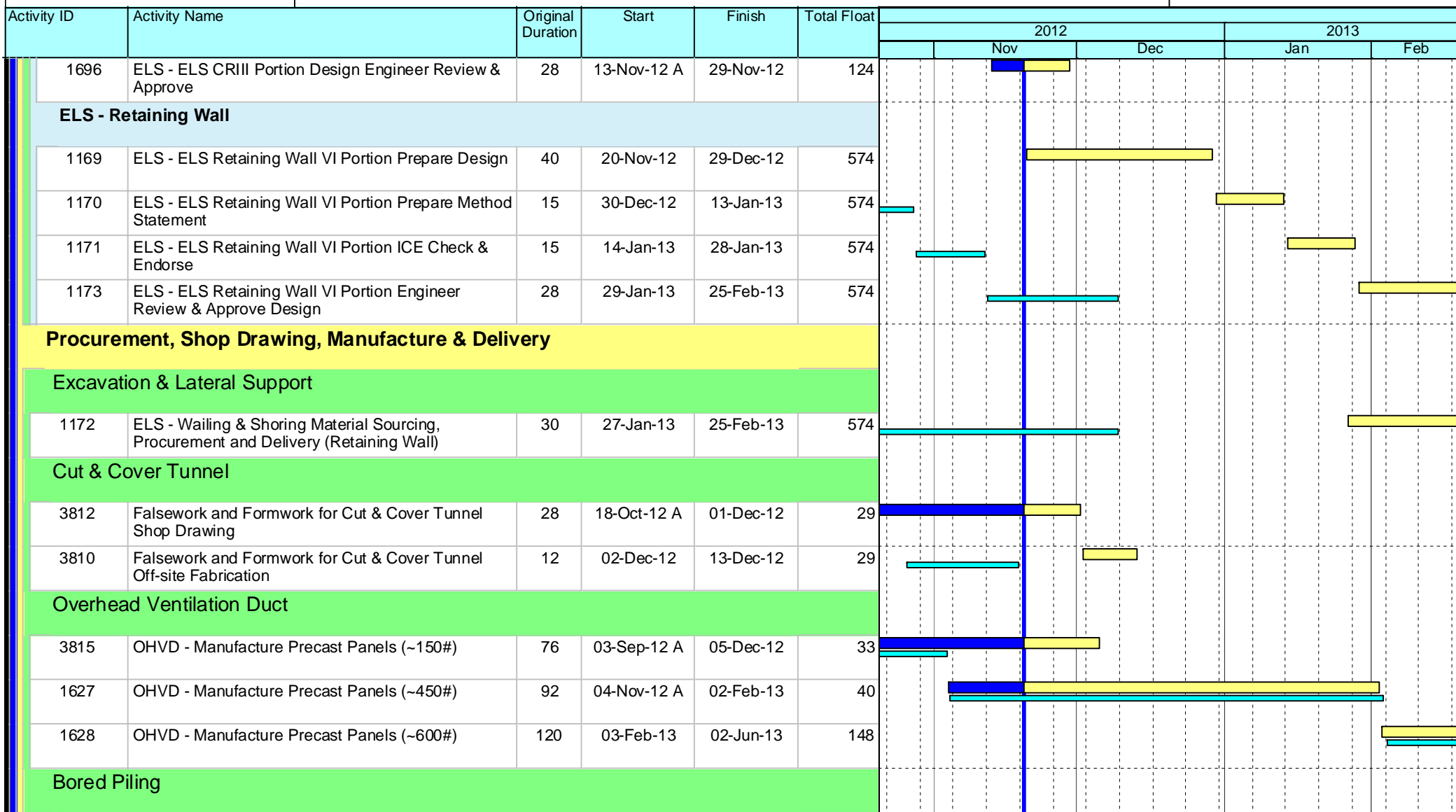
Project ID: U026
 Baseline: DCP4-4
 Layout: Update Three Month Rolling U026
 Page 2 of 12

U025 Programme Update 26 (Nov 2012)			
Date	Revision	Checked	Approv...
21-Nov-12	U026	EC	RW
21-Oct-12	U025	RC	RW

HY/2009/18 Central - Wan Chai Bypass (Central Interchange)



TASK filters: 3 Months, Not HL.



- ◆ Current Milestone
- Critical Remaining Work
- ▬ Level of Effort
- ▬ Remaining Work
- ▲ Baseline Milestone
- ▬ Project Baseline
- ▬ Actual Work

Leighton Contractors (Asia) Limited Programme Update 26 (Nov 2012) THREE MONTH ROLLING

Project ID: U026
 Baseline: DCP4-4
 Layout: Update Three Month Rolling U026
 Page 3 of 12

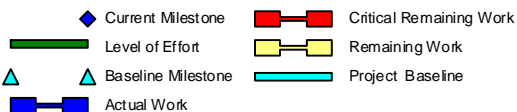
U025 Programme Update 26 (Nov 2012)			
Date	Revision	Checked	Approv..
21-Nov-12	U026	EC	RW
21-Oct-12	U025	RC	RW

HY/2009/18 Central - Wan Chai Bypass (Central Interchange)



TASK filters: 3 Months, Not HL.

Activity ID	Activity Name	Original Duration	Start	Finish	Total Float	2012					2013	
						Nov		Dec		Jan	Feb	
						Actual	Remaining	Actual	Remaining	Actual	Remaining	
1790	BP - Re-Submit Pre-bored H Pile Method Statement	12	17-Oct-12 A	05-Nov-12 A		█						
3825	BP - Initial Mobilisation & Procurement (Pre-bored H Pile)	12	18-Oct-12 A	14-Nov-12 A		█						
1791	BP - Pre-bored H Pile Method Statement Engineer Review & Approval	28	02-Nov-12 A	14-Nov-12 A		█						
1772	BP - Tender / Award Pre-bored Pile Subcontract for Layby	30	22-Dec-12	20-Jan-13	656				█	█		
1773	BP - Prepare & Submit Pre-bored H Pile Method Statement for Layby	28	21-Jan-13	17-Feb-13	656					█	█	
1775	BP - Pre-bored H Pile Method Statement Engineer Review & Approval	28	18-Feb-13	17-Mar-13	656						█	█
Post-tensioning												
3830	PT - Tender / Award Bridge Post-tensioning Subcontract	60	08-Nov-12 A	08-Jan-13	327		█	█	█	█		
3835	PT - Initial Mobilisation & Procurement	45	09-Jan-13	22-Feb-13	327					█	█	█
1137	PT - Prepare & Submit Post-tensioning Method Statement	15	11-Jan-13	25-Jan-13	327					█	█	
1141	PT - Post-tensioning Method Statement Engineer Review & Approval	28	26-Jan-13	22-Feb-13	327						█	█
Bridge Bearings												
1795	BEAR - Engineer Review & Approve Design & Particulars of Bearings	30	19-Oct-12 A	28-Nov-12	383	█	█					
3845	BEAR - Procure & Fabricate Bridge Bearings	30	25-Dec-12	23-Jan-13	327				█	█		
1142	BEAR - Prepare & Submit Bearing & Plinth Method Statement	15	11-Jan-13	25-Jan-13	327					█	█	
3846	BEAR - Delivery of Bearings	30	24-Jan-13	22-Feb-13	327						█	█
1143	BEAR - Bearing & Plinth Method Statement Engineer Review & Approval	28	26-Jan-13	22-Feb-13	327						█	█



Leighton Contractors (Asia) Limited Programme Update 26 (Nov 2012) THREE MONTH ROLLING

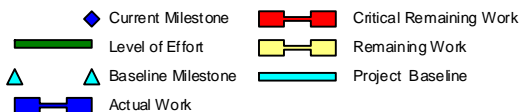
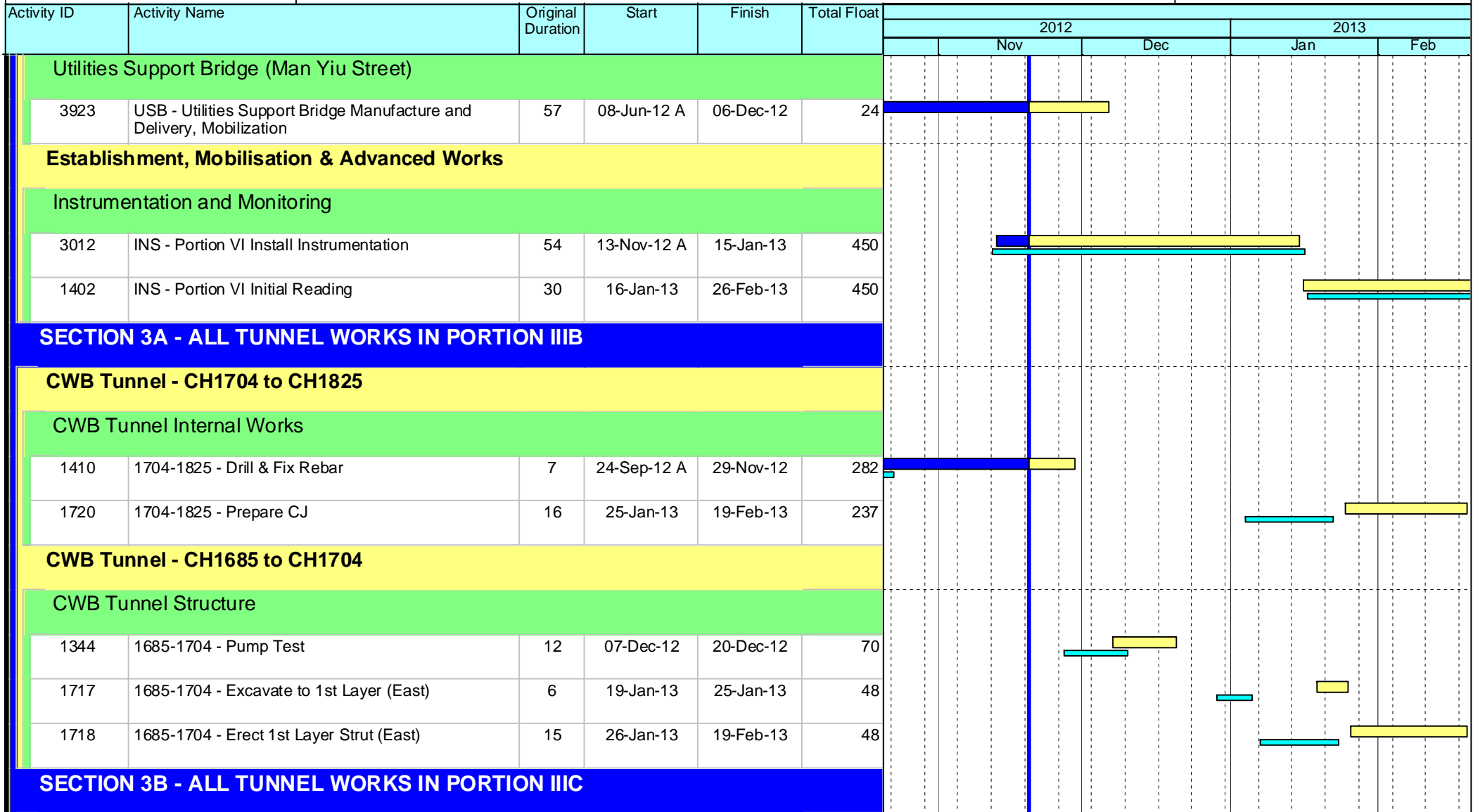
Project ID: U026
 Baseline: DCP4-4
 Layout: Update Three Month Rolling U026
 Page 4 of 12

U025 Programme Update 26 (Nov 2012)			
Date	Revision	Checked	Approv..
21-Nov-12	U026	EC	RW
21-Oct-12	U025	RC	RW

HY/2009/18 Central - Wan Chai Bypass (Central Interchange)



TASK filters: 3 Months, Not HL.



Leighton Contractors (Asia) Limited Programme Update 26 (Nov 2012) THREE MONTH ROLLING

Project ID: U026
 Baseline: DCP4-4
 Layout: Update Three Month Rolling U026
 Page 5 of 12

U025 Programme Update 26 (Nov 2012)			
Date	Revision	Checked	Approv...
21-Nov-12	U026	EC	RW
21-Oct-12	U025	RC	RW

Data Date: 20-Nov-12
 Print Date: 21-Nov-12

HY/2009/18 Central - Wan Chai Bypass (Central Interchange)



TASK filters: 3 Months, Not HL.

Activity ID	Activity Name	Original Duration	Start	Finish	Total Float	2012				2013	
						Nov		Dec		Jan	Feb
						Actual	Remaining	Actual	Remaining	Actual	Remaining
CWB Tunnel - CH1825 to CH2600											
CWB Tunnel Internal Works											
1380	1825-2600 - Prepare CJ Ch2600 - 2300	40	07-Sep-12 A	05-Dec-12	25						
1744	1825-2600 - Prepare CJ Ch2300 - 2000	40	03-Nov-12 A	24-Dec-12	237						
1390	1825-2600 - Erect Precast Slab & Stitching & Construct Kicker Ch2600 - 2300	69	06-Dec-12	06-Mar-13	25						
1746	1825-2600 - Prepare CJ Ch2000 - 1825	24	27-Dec-12	24-Jan-13	237						
1750	1825-2600 - Construct Roadside Barriers and Service Ducts (3m/d)	258	31-Jan-13	17-Dec-13	25						
SECTION 4B - ALL TUNNEL WORKS IN PORTION IVC, IVD, IVE & IVF											
CWB Tunnel - CH1480 to CH1580											
CWB Tunnel Structure											
1684	1480-1580 - Erect 4th Layer Strut (West)	11	19-Oct-12 A	02-Nov-12 A							
1686	1480-1580 - Excavate 4th Layer (East)	7	19-Oct-12 A	31-Oct-12 A							
1685	1480-1580 - Erect 4th Layer Strut (East)	12	02-Nov-12 A	15-Nov-12 A							
1687	1480-1580 - Excavate to Formation Layer	12	07-Nov-12 A	27-Nov-12	6						
1703	1480-1580 - Construct Vent Build Sump Pit Base Slab including Waterproofing	14	28-Nov-12	13-Dec-12	9						
1519	1480-1580 - Construct Vent Build Base Slab including Waterproofing (Bay 2)	30	28-Nov-12	04-Jan-13	6						
1522	1480-1580 - Construct Vent Build Base Slab including Waterproofing (Bay 4)	30	01-Dec-12	08-Jan-13	16						

- Current Milestone
- Critical Remaining Work
- Level of Effort
- Remaining Work
- Baseline Milestone
- Project Baseline
- Actual Work

Leighton Contractors (Asia) Limited Programme Update 26 (Nov 2012) THREE MONTH ROLLING

Project ID: U026
 Baseline: DCP4-4
 Layout: Update Three Month Rolling U026
 Page 6 of 12

U025 Programme Update 26 (Nov 2012)			
Date	Revision	Checked	Approv...
21-Nov-12	U026	EC	RW
21-Oct-12	U025	RC	RW

Data Date: 20-Nov-12
 Print Date: 21-Nov-12

HY/2009/18 Central - Wan Chai Bypass (Central Interchange)



TASK filters: 3 Months, Not HL.

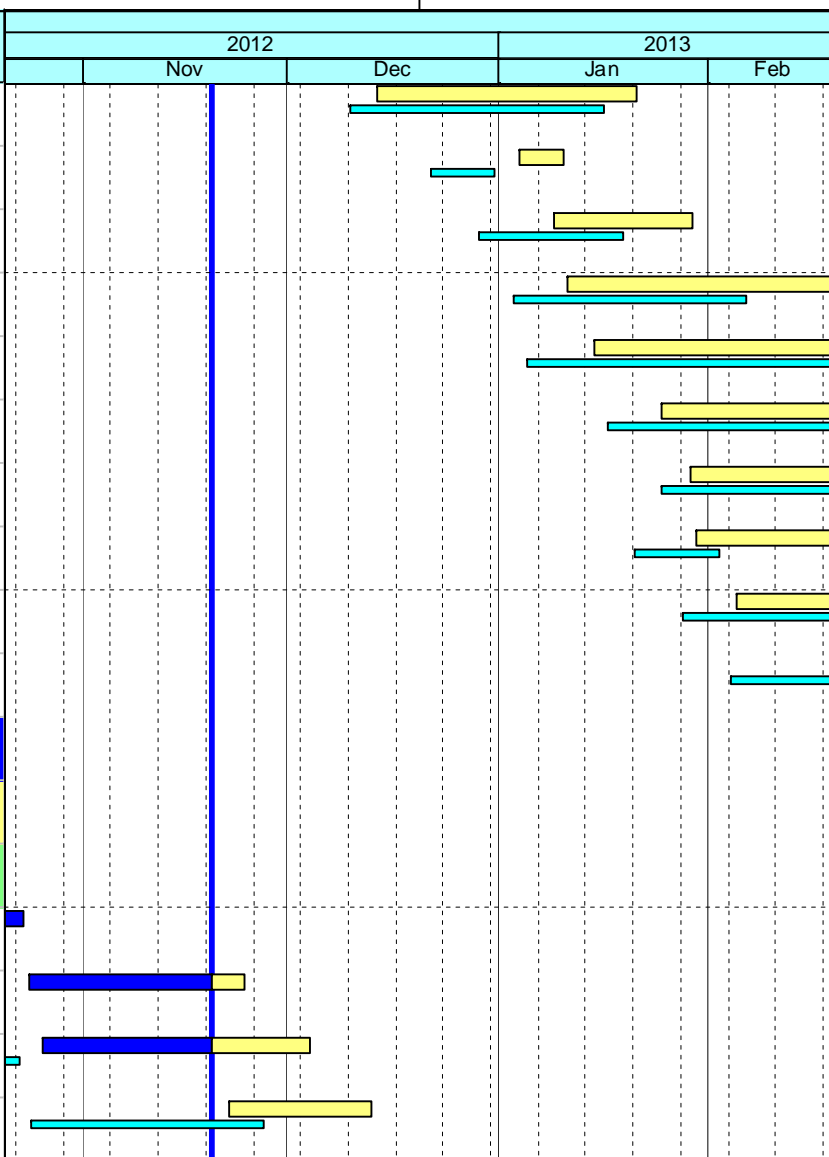
Activity ID	Activity Name	Original Duration	Start	Finish	Total Float	2012				2013								
						Nov		Dec		Jan		Feb						
						Start	End	Start	End	Start	End	Start	End					
1274	1480-1580 - Construct Vent Build Base Slab including Waterproofing (Bay 3)	30	14-Dec-12	21-Jan-13	9													
1747	1480-1580 - Erect Struct S3A & Remove the Soil Berm	6	04-Jan-13	10-Jan-13	6													
1526	1480-1580 - Construct Vent Build Basement Outer Wall (1535)	18	09-Jan-13	29-Jan-13	22													
1523	1480-1580 - Construct Vent Build Base Slab including Waterproofing (Bay 1)	30	11-Jan-13	21-Feb-13	6													
1585	1480-1580 - Construct Vent Build Basement Bearing Wall	39	15-Jan-13	07-Mar-13	14													
1748	1480-1580 - Dismantle of Basement Struts (Layer 3 & 4)	30	25-Jan-13	07-Mar-13	14													
1610	1480-1580 - Construct Vent Build Tunnel Base Slab including Waterproofing (Bay 6)	30	29-Jan-13	12-Mar-13	11													
1594	1480-1580 - Backfill for Tunnel (Bay 4 & 5)	12	30-Jan-13	19-Feb-13	22													
1527	1480-1580 - Construct Vent Build Basement Internal Wall	18	05-Feb-13	04-Mar-13	6													
1580	1480-1580 - Construct Vent Build Mezzanine Floor Slab	23	19-Feb-13	16-Mar-13	6													

SECTION 4A - ALL TUNNEL WORKS IN PORTION IVA, IVB, IVG & IVH

CWB Tunnel - CH1580 to CH1646

CWB Tunnel Structure

11301	1580-1646 - Excavate 1st Layer (West)	4	21-Sep-12 A	23-Oct-12 A	
1704	1580-1646 - Erect 1st Layer Strut (West)	21	24-Oct-12 A	24-Nov-12	7
11302	1580-1646 - Excavate 2nd Layer (West)	14	26-Oct-12 A	04-Dec-12	5
11303	1580-1646 - Erect 2nd Layer Strut (West)	18	22-Nov-12	13-Dec-12	5



- ◆ Current Milestone
- Critical Remaining Work
- Level of Effort
- Remaining Work
- ▲ Baseline Milestone
- Project Baseline
- Actual Work

Leighton Contractors (Asia) Limited Programme Update 26 (Nov 2012) THREE MONTH ROLLING

Project ID: U026
 Baseline: DCP4-4
 Layout: Update Three Month Rolling U026
 Page 7 of 12

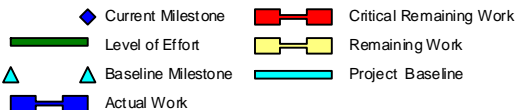
U025 Programme Update 26 (Nov 2012)			
Date	Revision	Checked	Approv..
21-Nov-12	U026	EC	RW
21-Oct-12	U025	RC	RW

HY/2009/18 Central - Wan Chai Bypass (Central Interchange)



TASK filters: 3 Months, Not HL.

Activity ID	Activity Name	Original Duration	Start	Finish	Total Float	2012				2013	
						Nov		Dec		Jan	Feb
						Actual	Remaining	Actual	Remaining	Actual	Remaining
11304	1580-1646 - Excavate 3rd Layer (West)	14	04-Dec-12	20-Dec-12	6						
1705	1580-1646 - Excavate 2nd Layer (East)	8	13-Dec-12	22-Dec-12	5						
11305	1580-1646 - Erect 3rd Layer Strut (West)	24	20-Dec-12	21-Jan-13	6						
1706	1580-1646 - Erect 2nd Layer Strut (East)	13	22-Dec-12	10-Jan-13	5						
1707	1580-1646 - Excavate 3rd Layer (East)	13	10-Jan-13	25-Jan-13	5						
11306	1580-1646 - Excavate 4th Layer (West)	7	21-Jan-13	29-Jan-13	6						
1708	1580-1646 - Erect 3rd Layer Strut (East)	14	25-Jan-13	18-Feb-13	5						
1734	1580-1646 - Construct CWB Tunnel Base Slab & Waterproofing (Bay 7)	20	29-Jan-13	28-Feb-13	6						
1709	1580-1646 - Excavate 4th Layer (East)	8	18-Feb-13	27-Feb-13	5						
CWB Tunnel - CH1646 to CH1685											
CWB Tunnel Structure											
1645	1646-1685 - Stabilize Inspection Chamber & Cooling Main Pipes	23	27-Aug-12 A	01-Dec-12	7						
1608	1646-1685 - Jet Grouting	38	05-Oct-12 A	06-Dec-12	27						
2705	1646-1685 - Install Pipe Pile Wall	45	12-Oct-12 A	06-Dec-12	3						
1649	1646-1685 - Install Sheet Piles at South	14	21-Nov-12	06-Dec-12	3						
2710	1646-1685 - Install Supporting Bridges for Cooling Water Mains & S1C Strut	7	07-Dec-12	14-Dec-12	18						
1414	1646-1685 Pump Test	14	07-Dec-12	22-Dec-12	27						



Leighton Contractors (Asia) Limited Programme Update 26 (Nov 2012) THREE MONTH ROLLING

Project ID: U026
 Baseline: DCP4-4
 Layout: Update Three Month Rolling U026
 Page 8 of 12

U025 Programme Update 26 (Nov 2012)			
Date	Revision	Checked	Approv..
21-Nov-12	U026	EC	RW
21-Oct-12	U025	RC	RW

Data Date: 20-Nov-12
 Print Date: 21-Nov-12

HY/2009/18 Central - Wan Chai Bypass (Central Interchange)



TASK filters: 3 Months, Not HL.

Activity ID	Activity Name	Original Duration	Start	Finish	Total Float	2012				2013	
						Nov		Dec		Jan	Feb
1710	1646-1685 - Excavate to 1st Layer (West) 1634-1650	6	07-Dec-12	13-Dec-12	27						
1644	1646-1685 - Excavate to S1B Layer East & West (+4.5mPD)	12	07-Dec-12	20-Dec-12	3						
11480	1646-1685 - Demolish Existing Roof Slab at East & West	20	10-Dec-12	04-Jan-13	3						
1711	1646-1685 - Erect 1st Layer Strut (West) 1634-1650	15	14-Dec-12	03-Jan-13	27						
1712	1646-1685 - Excavate to 2nd Layer (West) 1634-1650	6	04-Jan-13	10-Jan-13	27						
11400	1646-1685 - Excavate to S1B Layer	12	05-Jan-13	18-Jan-13	3						
1713	1646-1685 - Erect 2nd Layer Strut (West) 1634-1650	15	11-Jan-13	28-Jan-13	27						
11410	1646-1685 - Erect S1B Layer Strut	11	19-Jan-13	31-Jan-13	3						
1714	1646-1685 - Excavate to 3rd Layer (West) 1634-1650	6	29-Jan-13	04-Feb-13	27						
11420	1646-1685 - Excavate to S1 Layer	11	01-Feb-13	20-Feb-13	3						
1715	1646-1685 - Erect 3rd Layer Strut (West) 1634-1650	10	05-Feb-13	22-Feb-13	27						

SECTION 5 - ALL WORKS IN PORTION V & VA

General Surface Works

Formation & Roadworks - Man Kwong Street West Bound

2102	MKSVWB - Tree Transplanting / Felling	25	30-Jan-12 A	10-Nov-12 A	
------	---------------------------------------	----	-------------	-------------	--

CWB Trough B - CH1360 to CH1480

Trough Structure

- ◆ Current Milestone
- Critical Remaining Work
- Level of Effort
- Remaining Work
- ▲ Baseline Milestone
- Project Baseline
- Actual Work

Leighton Contractors (Asia) Limited Programme Update 26 (Nov 2012) THREE MONTH ROLLING

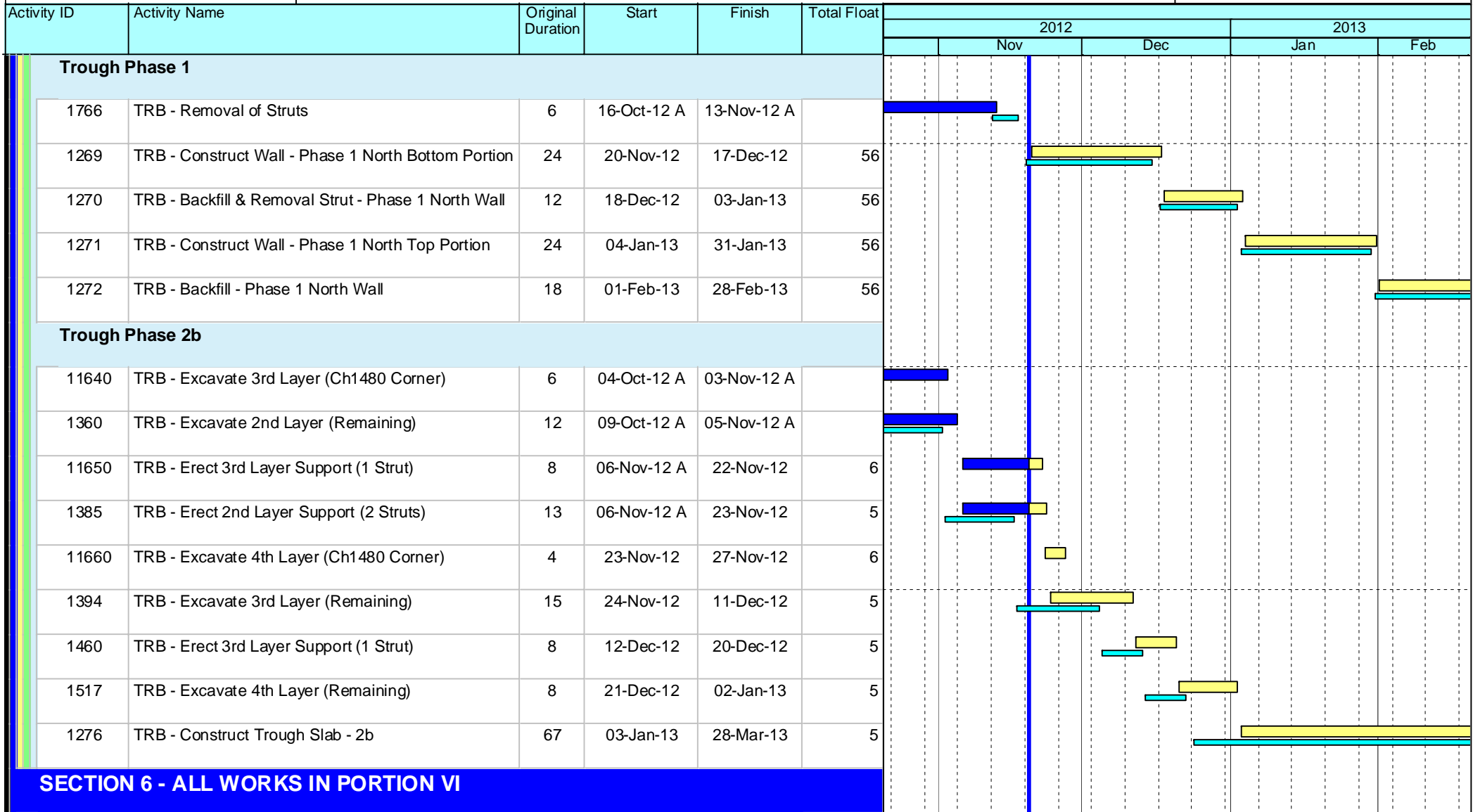
Project ID: U026
 Baseline: DCP4-4
 Layout: Update Three Month Rolling U026
 Page 9 of 12

U025 Programme Update 26 (Nov 2012)			
Date	Revision	Checked	Approv...
21-Nov-12	U026	EC	RW
21-Oct-12	U025	RC	RW

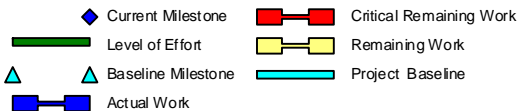
HY/2009/18 Central - Wan Chai Bypass (Central Interchange)



TASK filters: 3 Months, Not HL.



SECTION 6 - ALL WORKS IN PORTION VI



Leighton Contractors (Asia) Limited Programme Update 26 (Nov 2012) THREE MONTH ROLLING

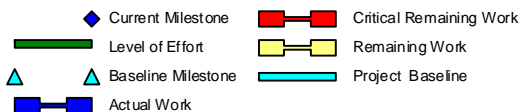
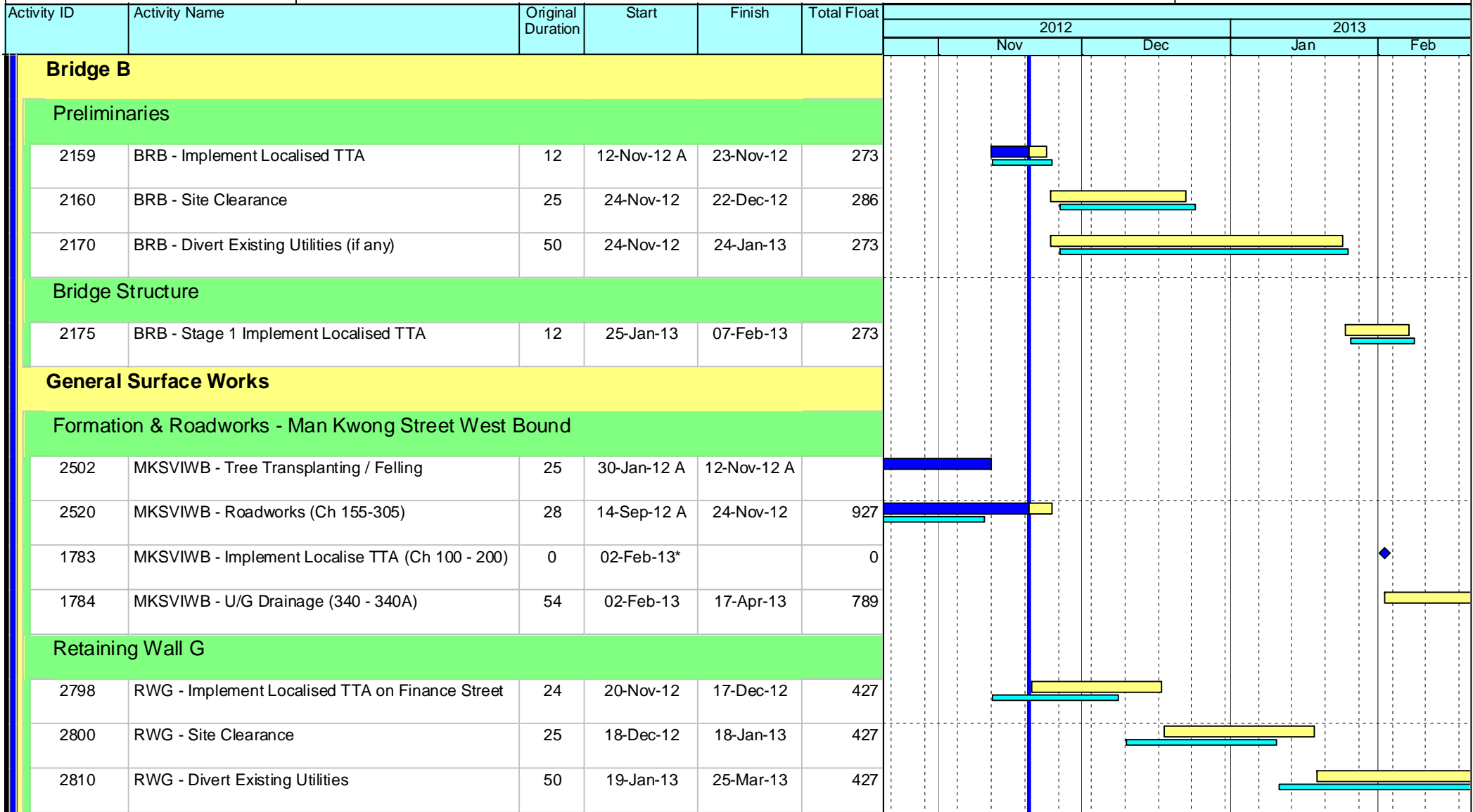
Project ID: U026
 Baseline: DCP4-4
 Layout: Update Three Month Rolling U026
 Page 10 of 12

U025 Programme Update 26 (Nov 2012)			
Date	Revision	Checked	Approv...
21-Nov-12	U026	EC	RW
21-Oct-12	U025	RC	RW

HY/2009/18 Central - Wan Chai Bypass (Central Interchange)



TASK filters: 3 Months, Not HL.



Leighton Contractors (Asia) Limited Programme Update 26 (Nov 2012) THREE MONTH ROLLING

Project ID: U026
 Baseline: DCP4-4
 Layout: Update Three Month Rolling U026
 Page 11 of 12

U025 Programme Update 26 (Nov 2012)			
Date	Revision	Checked	Approv...
21-Nov-12	U026	EC	RW
21-Oct-12	U025	RC	RW

Data Date: 20-Nov-12
 Print Date: 21-Nov-12

HY/2009/18 Central - Wan Chai Bypass (Central Interchange)



TASK filters: 3 Months, Not HL.

Activity ID	Activity Name	Original Duration	Start	Finish	Total Float	2012				2013	
						Nov		Dec	Jan	Feb	
						Nov	Dec	Dec	Jan	Feb	
Bridge A											
Preliminaries											
2250	BRA - Site Clearance	56	16-Jun-12 A	06-Nov-12 A		[Actual Work Bar]					
Bridge Structure											
2280	BRA - Pre-bored H Piles (1 no.)	12	10-Nov-12 A	23-Nov-12 A			[Actual Work Bar]				
2330	BRA - Loading Test	10	23-Nov-12 A	03-Dec-12	266			[Project Baseline Bar]			
2354	BRA - Pre-bored H Piles (27 nos.)	81	04-Dec-12	18-Mar-13	266			[Project Baseline Bar]			
Elevated Layby at Rumsey Street Flyover East Bound											
Preliminaries											
2460	RSFLB - Implement Localised TTA	12	11-Dec-12	24-Dec-12	529			[Project Baseline Bar]			
1113	RSFLB - Tree Transplantation	50	27-Dec-12	02-Mar-13	529			[Project Baseline Bar]			

- ◆ Current Milestone
- Critical Remaining Work
- Level of Effort
- Remaining Work
- ▲ Baseline Milestone
- Project Baseline
- Actual Work

Leighton Contractors (Asia) Limited Programme Update 26 (Nov 2012) THREE MONTH ROLLING

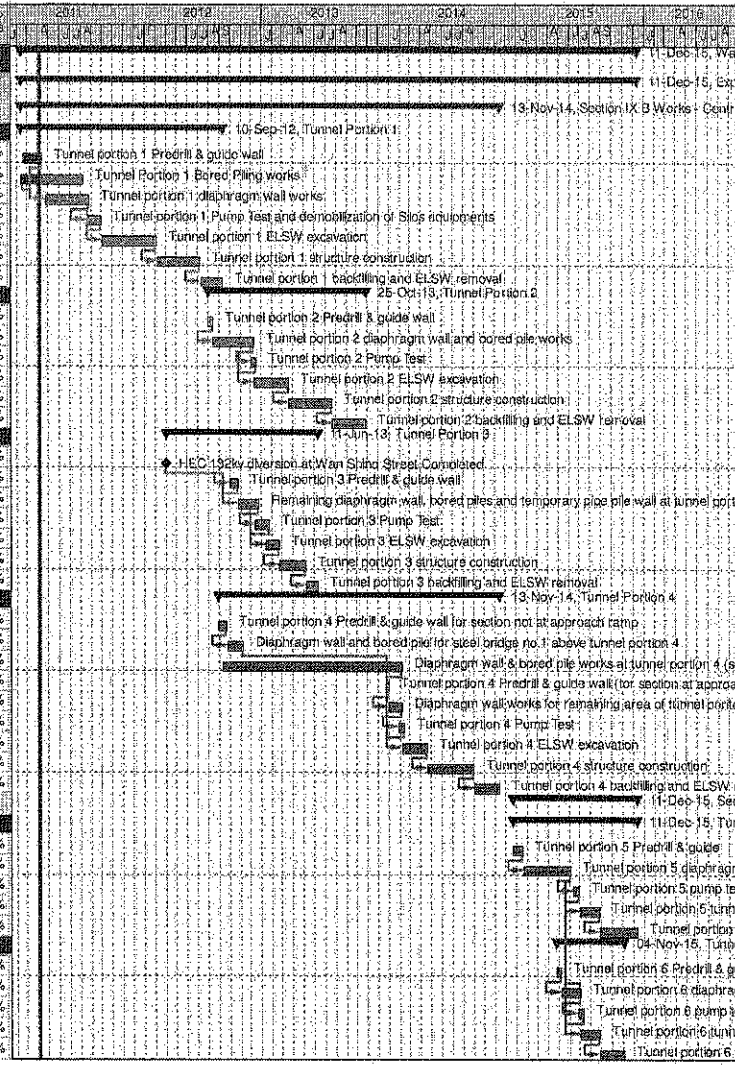
Project ID: U026
 Baseline: DCP4-4
 Layout: Update Three Month Rolling U026
 Page 12 of 12

U025 Programme Update 26 (Nov 2012)			
Date	Revision	Checked	Approv...
21-Nov-12	U026	EC	RW
21-Oct-12	U025	RC	RW

Wan Chai Development Phase II - Central - Wan Chai
Bypass at Wan Chai East CONTRACT HK/2009/02

CHUN WO - CRGL JV

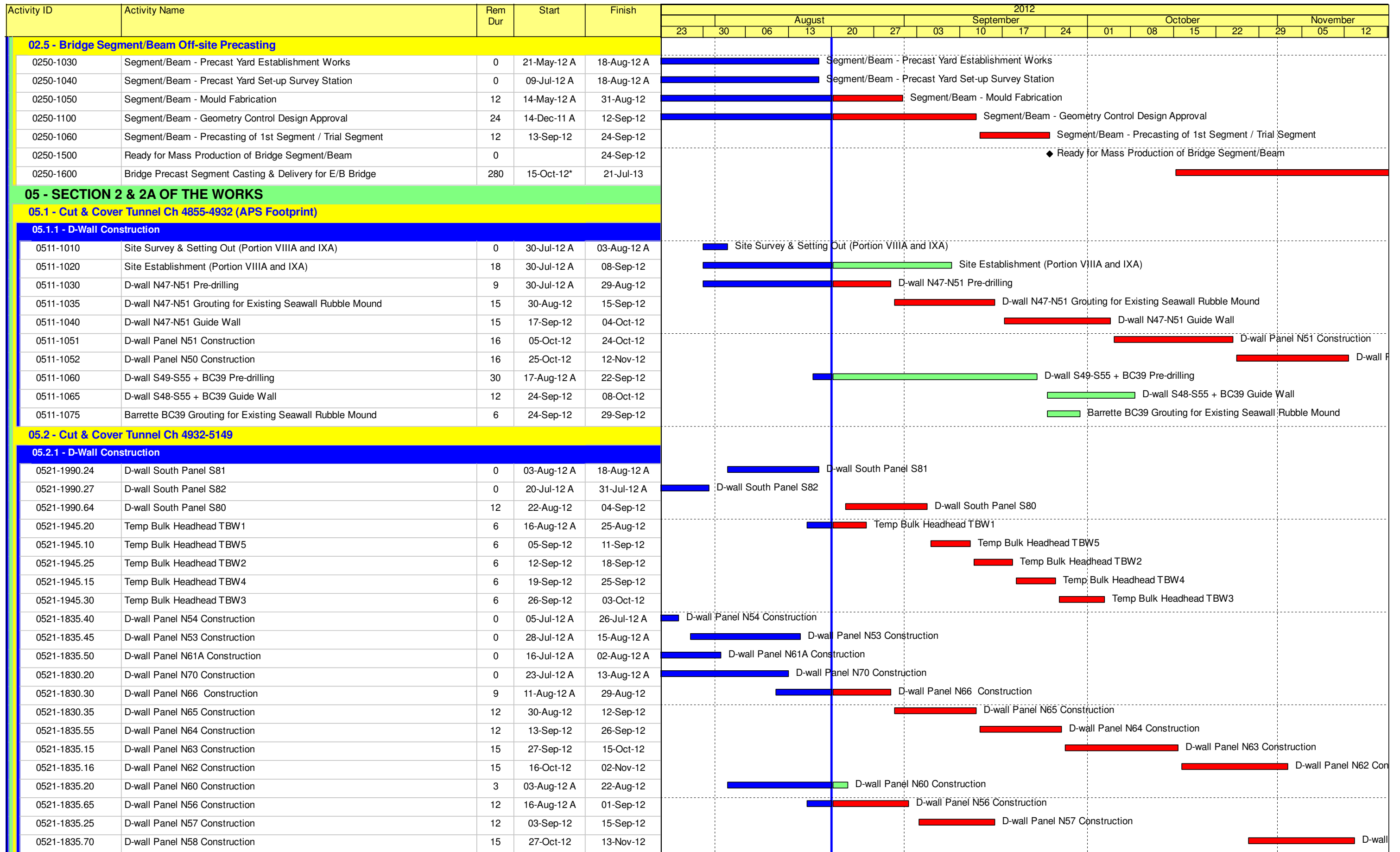
Activity ID	Activity Name	OD	Start	Finish	% Planned	2011	2012	2013	2014	2015	2016
Wan Chai Development Phase II - Central - Wan Chai Bypass at Wan Chai East											
Expanded and More Detailed Initial Works Programme											
Section IX B Works - Central - Wan Chai Bypass Tunnel Structure from chainage 3400 to eastern tunnel											
Tunnel Portion 1											
S9B-T1-0005	Tunnel portion 1 Predrill & guide wall	10	18-Feb-11	13-Apr-11	40%						
S9B-T1-0007	Tunnel Portion 1 Bored Piling works	105	09-Feb-11	08-Aug-11	0%						
S9B-T1-0010	Tunnel portion 1 diaphragm wall works	105	26-Apr-11	27-Aug-11	0%						
S9B-T1-0015	Tunnel portion 1 Pump Test and demobilization of Slos equipments	35	20-Aug-11	30-Sep-11	0%						
S9B-T1-0020	Tunnel portion 1 ELSW excavation	130	03-Oct-11	07-Mar-12	0%						
S9B-T1-0030	Tunnel portion 1 structure construction	100	09-Mar-12	09-Jul-12	0%						
S9B-T1-0040	Tunnel portion 1 backfilling and ELSW removal	54	10-Jul-12	10-Sep-12	0%						
Tunnel Portion 2											
S9B-T2-0105	Tunnel portion 2 Predrill & guide wall	10	02-Aug-12	13-Aug-12	0%						
S9B-T2-0010	Tunnel portion 2 diaphragm wall and bored pile works	100	14-Aug-12	10-Dec-12	0%						
S9B-T2-0015	Tunnel portion 2 Pump Test	14	03-Dec-12	18-Dec-12	0%						
S9B-T2-0020	Tunnel portion 2 ELSW excavation	80	11-Dec-12	19-Mar-13	0%						
S9B-T2-0030	Tunnel portion 2 structure construction	100	20-Mar-13	22-Jul-13	0%						
S9B-T2-0040	Tunnel portion 2 backfilling and ELSW removal	80	23-Jul-13	25-Oct-13	0%						
Tunnel Portion 3											
S9B-T3-0005	HEC 132kv diversion at Wan Shing Street Completed	0	01-Apr-12*		0%						
S9B-T3-0008	Tunnel portion 3 Predrill & guide wall	20	02-Oct-12	25-Oct-12	0%						
S9B-T3-0010	Remaining diaphragm wall, bored piles and temporary pipe pile wall at tunnel portion 3	50	25-Oct-12	22-Dec-12	0%						
S9B-T3-0015	Tunnel portion 3 Pump Test	30	15-Dec-12	22-Jan-13	0%						
S9B-T3-0020	Tunnel portion 3 ELSW excavation	30	15-Jan-13	20-Feb-13	0%						
S9B-T3-0030	Tunnel portion 3 structure construction	80	21-Feb-13	08-May-13	0%						
S9B-T3-0040	Tunnel portion 3 backfilling and ELSW removal	30	07-May-13	11-Jun-13	0%						
Tunnel Portion 4											
S9B-T4-0005	Tunnel portion 4 Predrill & guide wall for section not at approach ramp	21	30-Aug-12	22-Sep-12	0%						
S9B-T4-0010	Diaphragm wall and bored pile for steel bridge no.1 above tunnel portion 4	40	24-Sep-12	10-Nov-12	0%						
S9B-T4-0020	Diaphragm wall & bored pile works at tunnel portion 4 (section not at approach ramp)	420	11-Sep-12	05-Feb-14	0%						
S9B-T4-0025	Tunnel portion 4 Predrill & guide wall (for section at approach ramp)	5	23-Dec-13	30-Dec-13	0%						
S9B-T4-0030	Diaphragm wall works for remaining area of tunnel portion 4 (for section at approach ramp)	30	31-Dec-13	06-Feb-14	0%						
S9B-T4-0035	Tunnel portion 4 Pump Test	14	28-Jan-14	14-Feb-14	0%						
S9B-T4-0040	Tunnel portion 4 ELSW excavation	60	07-Feb-14	19-Apr-14	0%						
S9B-T4-0050	Tunnel portion 4 structure construction	110	22-Apr-14	01-Sep-14	0%						
S9B-T4-0060	Tunnel portion 4 backfilling and ELSW removal	60	02-Sep-14	13-Nov-14	0%						
Section X Works - Central - Wan Chai Bypass Tunnel Structure from western tunnel to chainage 3400											
Tunnel Portion 5											
S10-T5-0005	Tunnel portion 5 Predrill & guide	21	23-Dec-14	19-Jan-15	0%						
S10-T5-0010	Tunnel portion 5 diaphragm wall & bored pile works	110	20-Jan-15	04-Jun-15	0%						
S10-T5-0015	Tunnel portion 5 pump test	14	13-Jun-15	30-Jun-15	0%						
S10-T5-0020	Tunnel portion 5 tunnel ELSW excavation	45	04-Jul-15	25-Aug-15	0%						
S10-T5-0030	Tunnel portion 5 tunnel structure construction	90	26-Aug-15	11-Dec-15	0%						
Tunnel Portion 6											
S10-T6-0040	Tunnel portion 6 Predrill & guide	12	24-Apr-15	08-May-15	0%						
S10-T6-0050	Tunnel portion 6 diaphragm wall & bored pile works at Area 10	45	09-May-15	09-Jul-15	0%						
S10-T6-0055	Tunnel portion 6 pump test	14	25-Jun-15	11-Jul-15	0%						
S10-T6-0060	Tunnel portion 6 tunnel ELSW excavation at Area 10	45	04-Jul-15	26-Aug-15	0%						
S10-T6-0070	Tunnel portion 6 tunnel structure construction at Area 10	58	26-Aug-15	04-Nov-15	0%						



CEDD CONTRACT NO. HK/2009/02
Wan Chai Development Phase II - Central Wan Chai Bypass at Wan Chai East (Contract 2)
 Revised Programme dated 7 April 2011

Date	Revision	Checked	Approved
07-Apr-11		KT	KY

Page 10 of 11



- Remaining Level of Effort
- Actual Level of Effort
- Actual Work
- Remaining Work
- Critical Remaining Work
- ◆ Milestone

Contract HY/2009/19

Three Month Rolling Programme (20 AUG 2012 to 19 NOV 2012)

3MRP

3MRP - AUG 2012 to NOV 2012

Page 2 of 6

Activity ID	Activity Name	Rem Dur	Start	Finish	2012																
					August					September				October				November			
					23	30	06	13	20	27	03	10	17	24	01	08	15	22	29	05	12
1011-2740	Marine bored pile F2A-3	0	18-Jul-12 A	03-Aug-12 A	Marine bored pile F2A-3																
1011-2741	Marine bored pile F2A-2	0	01-Aug-12 A	18-Aug-12 A	Marine bored pile F2A-2																
1011-2742	Marine bored pile F2A-1	14	20-Aug-12	04-Sep-12	Marine bored pile F2A-1																
1011-2743	Marine bored pile F2A-4	14	05-Sep-12	20-Sep-12	Marine bored pile F2A-4																
1011-2745	Marine bored pile testing F2A	18	21-Sep-12	12-Oct-12	Marine bored pile testing F2A																
1011-2720	Dolphin socketed H-pile pier F2-P1	21	19-Oct-12	13-Nov-12	Dolphin socketed H-pile pier F2-P1																
1011-2940	Dolphin socketed H-pile pier F2-P2	24	19-Oct-12	16-Nov-12	Dolphin socketed H-pile pier F2-P2																
1011-2950	Dolphin socketed H-pile pier F2-P3	27	19-Oct-12	20-Nov-12	Dolphin socketed H-pile pier F2-P3																
10.1.2 - Land Pier Construction																					
Abutment D12																					
1012-1220	Abutment D12 construction (E/B Bridge)	42	03-Sep-12	22-Oct-12	Abutment D12 construction (E/B Bridge)																
Pier D08 to D11																					
1012-1030.30	Pier D08 Bored Pile D8-1	3	11-Aug-12 A	22-Aug-12	Pier D08 Bored Pile D8-1																
1012-1030.40	Pier D08 Bored Pile D8-6	9	06-Aug-12 A	29-Aug-12	Pier D08 Bored Pile D8-6																
1012-1030.50	Pier D08 Bored Pile D8-3	0	23-Jul-12 A	03-Aug-12 A	Pier D08 Bored Pile D8-3																
1012-1030.60	Pier D08 Bored Pile D8-4	0	23-Jul-12 A	09-Aug-12 A	Pier D08 Bored Pile D8-4																
1012-1100	Pier D08 Construct Pile Cap	18	06-Sep-12	26-Sep-12	Pier D08 Construct Pile Cap																
1012-1110	Pier D08 Construct Pier/Column	12	10-Oct-12	24-Oct-12	Pier D08 Construct Pier/Column																
1012-1130	Pier D09 Construct Pile Cap	7	01-Jun-12 A	27-Aug-12	Pier D09 Construct Pile Cap																
1012-1140	Pier D09 Construct Pier/Column	18	28-Aug-12	17-Sep-12	Pier D09 Construct Pier/Column																
1012-1150	Pier D09 Construct Crosshead + Bearing	24	18-Sep-12	16-Oct-12	Pier D09 Construct Crosshead + Bearing																
1012-1160	Pier D10 Construct Pile Cap	21	25-Jun-12 A	12-Sep-12	Pier D10 Construct Pile Cap																
1012-1170	Pier D10 Construct Pier/Column	18	18-Sep-12	09-Oct-12	Pier D10 Construct Pier/Column																
1012-1180	Pier D10 Construct Crosshead + Bearing	24	17-Oct-12	14-Nov-12	Pier D10 Construct Crosshead + Bearing																
1012-1190	Pier D11 Construct Pile Cap	12	12-Jun-12 A	01-Sep-12	Pier D11 Construct Pile Cap																
1012-1200	Pier D11 Construct Pier/Column	12	25-Oct-12	07-Nov-12	Pier D11 Construct Pier/Column																
Pier D05 to D07																					
1012-1290.20	Pier D05 Bored Pile D05-1	12	01-Nov-12*	14-Nov-12	Pier D05 Bored Pile D05-1																
1012-1272	Pier D07 Bored Pile D07-6	0	21-Jul-12 A	09-Aug-12 A	Pier D07 Bored Pile D07-6																
1012-1273	Pier D07 Bored Pile D07-1	0	11-Aug-12 A	18-Aug-12 A	Pier D07 Bored Pile D07-1																
1012-1274	Pier D07 Bored Pile D07-3	18	20-Aug-12	08-Sep-12	Pier D07 Bored Pile D07-3																
1012-1275	Pier D07 Bored Pile D07-4	18	10-Sep-12	29-Sep-12	Pier D07 Bored Pile D07-4																
10.1.3 - E/B Bridge Construction																					
Bridge D3																					
1013-1000.20	Segment and Beam Launching - Submit Design Launching Girder	24	14-May-12 A	15-Sep-12	Segment and Beam Launching - Submit Design Launching Girder																
1013-1000.30	Segment and Beam Launching - Approve Design Launching Girder	28	17-Sep-12	19-Oct-12	Segment and Beam Launching - Approve Design Launching Girder																
1013-1010	Segment and Beam Launching - Fabricate Launching Girder	85	11-Jun-12 A	28-Nov-12	Segment and Beam Launching - Fabricate Launching Girder																

- Remaining Level of Effort
- Actual Level of Effort
- Actual Work
- Remaining Work
- Critical Remaining Work
- ◆ Milestone

Contract HY/2009/19

Three Month Rolling Programme (20 AUG 2012 to 19 NOV 2012)

3MRP

3MRP - AUG 2012 to NOV 2012

Page 6 of 6

Activity ID	Activity Name	Rem Dur	Start	Finish	2012												2013					
					November						December						January			February		
					22	29	05	12	19	26	03	10	17	24	31	07	14	21	28	04	11	18
3MRP - NOV 2012 to FEB 2012																						
02 - PRE-CONSTRUCTION WORKS																						
02.2 - Contractor's Submission																						
0220-1360	Tunnel Structures Materials - Submission	21	19-Jul-12 A	10-Dec-12	Tunnel Structures Materials - Submission																	
0220-1370	Tunnel Structures Materials - ER Review/Comment	28	11-Dec-12	07-Jan-13	Tunnel Structures Materials - ER Review/Comment																	
0220-1380	Tunnel Structures Materials - Resubmission	14	08-Jan-13	21-Jan-13	Tunnel Structures Materials - Resubmission																	
0220-1390	Tunnel Structures Materials - ER Approval	21	22-Jan-13	11-Feb-13	Tunnel Structures Materials - ER Approval																	
0220-1500	Bridge Bearing - Procurement & Delivery	120	24-Sep-12 A	19-Mar-13*	Bridge Bearing - Procurement & Delivery																	
02.3 - Method Statement / Shop Drawings																						
0230-1280	MS Cut & Cover Tunnel ELS - Resubmission	12	13-Jul-12 A	01-Dec-12	MS Cut & Cover Tunnel ELS - Resubmission																	
0230-1290	MS Cut & Cover Tunnel ELS - ER Approval	12	07-Aug-12 A	13-Dec-12	MS Cut & Cover Tunnel ELS - ER Approval																	
0230-1350	MS Pre-cast Segment Launching - ER Review & Comment	14	20-Sep-12 A	03-Dec-12	MS Pre-cast Segment Launching - ER Review & Comment																	
0230-1360	MS Pre-cast Segment Launching - Resubmission	28	04-Dec-12	31-Dec-12	MS Pre-cast Segment Launching - Resubmission																	
0230-1370	MS Pre-cast Segment Launching - ER Approval	28	01-Jan-13	28-Jan-13	MS Pre-cast Segment Launching - ER Approval																	
0230-1480	MS Stressing Tendons - Resubmission	14	08-Aug-12 A	03-Dec-12	MS Stressing Tendons - Resubmission																	
0230-1490	MS Stressing Tendons - ER Approval	28	04-Dec-12	31-Dec-12	MS Stressing Tendons - ER Approval																	
0230-1580	MS Interim & Permanent Noise Semi Enclosure - Submission	28	02-Jan-13*	29-Jan-13	MS Interim & Permanent Noise Semi Enclosure - Submission																	
0230-1590	MS Interim & Permanent Noise Semi Enclosure - ER Review & Comment	28	30-Jan-13	26-Feb-13	MS Interim & Permanent Noise Semi Enclosure - ER Review & Comment																	
0230-1310	MS Pre-casting Beam - ER Review & Comment	0	16-Oct-12 A	05-Nov-12 A	MS Pre-casting Beam - ER Review & Comment																	
0230-1320	MS Pre-casting Beam - Resubmission	28	10-Dec-12*	06-Jan-13	MS Pre-casting Beam - Resubmission																	
0230-1330	MS Pre-casting Beam - ER Approval	21	07-Jan-13	27-Jan-13	MS Pre-casting Beam - ER Approval																	
02.4 - Contractor's Design and Build Items																						
0240-1010	Temp Bridge "TA" Design - Prep & Submit	45	16-Dec-11 A	03-Jan-13	Temp Bridge "TA" Design - Prep & Submit																	
0240-1020	Temp Bridge "TA" Design - ER review and comment	28	04-Jan-13	31-Jan-13	Temp Bridge "TA" Design - ER review and comment																	
0240-1030	Temp Bridge "TA" Design - Resubmission	45	01-Feb-13	17-Mar-13	Temp Bridge "TA" Design - Resubmission																	
0240-1041	Temp Bridge "TD" Design - Submission	28	04-Feb-13*	03-Mar-13	Temp Bridge "TD" Design - Submission																	
0240-1376	Cut & Cover Tunnel ELS Design - ER Review & Resubmission	18	14-Jun-12 A	07-Dec-12	Cut & Cover Tunnel ELS Design - ER Review & Resubmission																	
0240-1377	Cut & Cover Tunnel ELS Design - ER Approval	21	08-Dec-12	28-Dec-12	Cut & Cover Tunnel ELS Design - ER Approval																	
0240-1379	Cut & Cover Tunnel ELS Fabrication	60	29-Dec-12	26-Feb-13	Cut & Cover Tunnel ELS Fabrication																	
02.5 - Bridge Segment/Beam Off-site Precasting																						
0250-1600.01	Bridge D3 Pier D09 Precasting Segment (1-6) - Mould S1	0	12-Oct-12 A	19-Nov-12 A	Bridge D3 Pier D09 Precasting Segment (1-6) - Mould S1																	
0250-1600.02	Bridge D3 Pier D09 Precasting Segment (7-9) - Mould S1	11	20-Nov-12	30-Nov-12	Bridge D3 Pier D09 Precasting Segment (7-9) - Mould S1																	
0250-1600.03	Bridge D3 Pier D09 Precasting Segment (9-15) - Mould S1	19	01-Dec-12	19-Dec-12	Bridge D3 Pier D09 Precasting Segment (9-15) - Mould S1																	
0250-1600.04	Bridge D3 Pier D09 Precasting Segment (16-17) - Mould S1	5	20-Dec-12	24-Dec-12	Bridge D3 Pier D09 Precasting Segment (16-17) - Mould S1																	
0250-1600.06	Bridge D3 Pier D10 Precasting Segment (1-17) - Mould S1	42	25-Dec-12	04-Feb-13	Bridge D3 Pier D10 Precasting Segment (1-17) - Mould S1																	
0250-1600.07	Bridge D3 Pier D11 Precasting Segment (1-17) - Mould S1	42	05-Feb-13	18-Mar-13	Bridge D3 Pier D11 Precasting Segment (1-17) - Mould S1																	
0250-1650.01	Bridge D3 Pier D08 Precasting Segment (1-8) - Mould S2	29	03-Dec-12*	31-Dec-12	Bridge D3 Pier D08 Precasting Segment (1-8) - Mould S2																	
0250-1650.02	Bridge D3 Pier D12 Precasting Segment (1-4) - Mould S2	18	01-Jan-13	18-Jan-13	Bridge D3 Pier D12 Precasting Segment (1-4) - Mould S2																	
0250-1650.03	Bridge F1 Pier F03 Precasting Segment (1-5) - Mould S2	21	19-Jan-13	08-Feb-13	Bridge F1 Pier F03 Precasting Segment (1-5) - Mould S2																	
0250-1650.04	Bridge F1 Pier F03 Precasting Segment (1-5) - Mould S2	21	09-Feb-13	01-Mar-13	Bridge F1 Pier F03 Precasting Segment (1-5) - Mould S2																	
05 - SECTION 2 & 2A OF THE WORKS																						
05.1 - Cut & Cover Tunnel Ch 4855-4932 (APS Footprint)																						
05.1.1 - D-Wall Construction																						
0511-1040	D-wall N47-N51 Guide Wall	0	25-Oct-12 A	31-Oct-12 A	D-wall N47-N51 Guide Wall																	

- Remaining Level of Effort
- Actual Level of Effort
- Actual Work
- Remaining Work
- Critical Remaining Work
- ◆ Milestone

Contract HY/2009/19

Three Month Rolling Programme (20 NOV 2012 to 19 FEB 2013)

3MRP

3MRP - NOV 2012 to FEB 2012

Page 1 of 6

Activity ID	Activity Name	Rem Dur	Start	Finish	2012																	2013			
					November							December					January					February			
					22	29	05	12	19	26	03	10	17	24	31	07	14	21	28	04	11	18			
0511-1051	D-wall Panel N51 Construction	0	05-Oct-12 A	13-Nov-12 A	D-wall Panel N51 Construction																				
0511-1062	D-wall S49-S50 Grouting for Existing Seawall Rubble Mound	0	20-Oct-12 A	31-Oct-12 A	D-wall S49-S50 Grouting for Existing Seawall Rubble Mound																				
0511-1052	D-wall Panel N50 Construction	20	20-Nov-12	12-Dec-12	D-wall Panel N50 Construction																				
0511-1055	D-wall Panel N47 Construction	4	09-Nov-12 A	23-Nov-12	D-wall Panel N47 Construction																				
0511-1053	D-wall Panel N49 Construction	20	13-Dec-12	07-Jan-13	D-wall Panel N49 Construction																				
0511-1054	D-wall Panel N48 Construction	12	08-Jan-13	21-Jan-13	D-wall Panel N48 Construction																				
0511-1065	D-wall S48-S55 + BC39 Guide Wall	9	20-Sep-12 A	29-Nov-12	D-wall S48-S55 + BC39 Guide Wall																				
0511-1075	Barrette BC39 Grouting for Existing Seawall Rubble Mound	6	30-Nov-12	06-Dec-12	Barrette BC39 Grouting for Existing Seawall Rubble Mound																				
0511-1072	D-wall Panel S54 Construction	18	18-Jan-13	07-Feb-13	D-wall Panel S54 Construction																				
0511-1073	D-wall Panel S53 Construction	24	08-Feb-13	11-Mar-13	D-wall Panel S53 Construction																				
05.2 - Cut & Cover Tunnel Ch 4932-5149																									
05.2.1 - D-Wall Construction																									
0521-1835.16	D-wall Panel N63 Construction	0	24-Oct-12 A	16-Nov-12 A	D-wall Panel N63 Construction																				
0521-1835.70	D-wall Panel N58 Construction	0	13-Oct-12 A	08-Nov-12 A	D-wall Panel N58 Construction																				
0521-1835.30	D-wall Panel N59 Construction	18	10-Nov-12 A	10-Dec-12	D-wall Panel N59 Construction																				
0521-1990.38	D-wall South Panel S64 Construction	0	01-Sep-12 A	29-Oct-12 A	D-wall South Panel S64 Construction																				
0521-1990.65	D-wall South Panel S68 Construction	16	09-Oct-12 A	07-Dec-12	D-wall South Panel S68 Construction																				
0521-1990.66	D-wall South Panel S67 Construction	15	10-Dec-12	27-Dec-12	D-wall South Panel S67 Construction																				
0521-1990.67	D-wall South Panel S66 Construction	15	29-Dec-12	16-Jan-13	D-wall South Panel S66 Construction																				
0521-1990.68	D-wall South Panel S65 Construction	21	18-Jan-13	14-Feb-13	D-wall South Panel S65 Construction																				
0521-1990.71	D-wall South Panel S57 Construction	5	14-Nov-12 A	24-Nov-12	D-wall South Panel S57 Construction																				
0521-1990.72	D-wall South Panel S58 Construction	24	26-Nov-12	22-Dec-12	D-wall South Panel S58 Construction																				
0521-1990.73	D-wall South Panel S59 Construction	24	24-Dec-12	22-Jan-13	D-wall South Panel S59 Construction																				
0521-1990.74	D-wall South Panel S60 Construction	24	24-Jan-13	23-Feb-13	D-wall South Panel S60 Construction																				
0521-1990.70	D-wall South Panel S61 Construction	8	01-Nov-12 A	28-Nov-12	D-wall South Panel S61 Construction																				
0521-1750.45	D-wall Panel N86 Construction	14	01-Dec-12	17-Dec-12	D-wall Panel N86 Construction																				
0521-1710.35	D-wall Panel S94 Construction	15	18-Dec-12	05-Jan-13	D-wall Panel S94 Construction																				
0521-1990.17	D-wall South Panel S99 Construction	15	29-Dec-12	16-Jan-13	D-wall South Panel S99 Construction																				
0521-1990.30	D-wall South Panel N92 Construction	15	17-Jan-13	02-Feb-13	D-wall South Panel N92 Construction																				
0521-1990.76	D-wall South Panel N100 Construction	0	15-Oct-12 A	02-Nov-12 A	D-wall South Panel N100 Construction																				
0521-1990.31	D-wall South Panel S108	15	12-Nov-12 A	06-Dec-12	D-wall South Panel S108																				
0521-1990.32	D-wall South Panel S107	0	29-Oct-12 A	10-Nov-12 A	D-wall South Panel S107																				
0521-1938	Sheet Pile Pre-boring at Seawall Rubble Mound	0	05-Nov-12 A	14-Nov-12 A	Sheet Pile Pre-boring at Seawall Rubble Mound																				
0521-1940	Construct Temporary End Wall (Sheet Piles) 1st Layer	0	07-Nov-12 A	19-Nov-12 A	Construct Temporary End Wall (Sheet Piles) 1st Layer																				
0521-1642	Construct Temporary End Wall (Sheet Piles) 2nd Layer	6	20-Nov-12	26-Nov-12	Construct Temporary End Wall (Sheet Piles) 2nd Layer																				
0521-1943	Construct Temporary End Wall (Sheet Piles) 3rd Layer	8	27-Nov-12	05-Dec-12	Construct Temporary End Wall (Sheet Piles) 3rd Layer																				
0521-1945	Grouting North Dwall and Sheetpiles Interface	12	06-Dec-12	19-Dec-12	Grouting North Dwall and Sheetpiles Interface																				
0521-2185	Grouting South Dwall and Sheetpiles Interface	12	17-Dec-12	31-Dec-12	Grouting South Dwall and Sheetpiles Interface																				
05.2.2 - Barrette Construction																									
0522-2210.54	Barrette Pile BC54	0	22-Oct-12 A	31-Oct-12 A	Barrette Pile BC54																				
0522-2210.69	Barrette Pile BC60	10	19-Nov-12 A	30-Nov-12	Barrette Pile BC60																				
0522-2210.71	Barrette Pile BC67	0	08-Nov-12 A	19-Nov-12 A	Barrette Pile BC67																				
05.3 - Box Culvert T1																									
0530-3040	Bay 3 and 4 - Backfilling	0	15-Oct-12 A	02-Nov-12 A	Bay 3 and 4 - Backfilling																				

- █ Remaining Level of Effort
- █ Actual Level of Effort
- █ Actual Work
- █ Remaining Work
- █ Critical Remaining Work
- ◆ Milestone

Contract HY/2009/19

Three Month Rolling Programme (20 NOV 2012 to 19 FEB 2013)

3MRP

3MRP - NOV 2012 to FEB 2012

Page 2 of 6

Activity ID	Activity Name	Rem Dur	Start	Finish	2012																	2013							
					November							December							January			February							
					22	29	05	12	19	26	03	10	17	24	31	07	14	21	28	04	11	18							
0530-3050	Bay 3 and 4 - Reinstatement	0	29-Oct-12 A	03-Nov-12 A	Bay 3 and 4 - Reinstatement																								
0530-3060	Bay 2 - Demolish Road Pavement	0	06-Nov-12 A	12-Nov-12 A	Bay 2 - Demolish Road Pavement																								
0530-3061	Bay 2 - Implement TTA	0	03-Nov-12 A	05-Nov-12 A	Bay 2 - Implement TTA																								
0530-3065	Bay 2 - Install Sheet Piles	1	13-Nov-12 A	20-Nov-12	Bay 2 - Install Sheet Piles																								
0530-3071	Bay 2 - ELS + Blinding	10	21-Nov-12	01-Dec-12	Bay 2 - ELS + Blinding																								
0530-3072	Bay 2 - Base Slab	6	03-Dec-12	08-Dec-12	Bay 2 - Base Slab																								
0530-3073	Bay 2 - Wall & Roof	8	10-Dec-12	18-Dec-12	Bay 2 - Wall & Roof																								
0530-3074	Bay 2 - Backfilling + Reinstatement	23	19-Dec-12	16-Jan-13	Bay 2 - Backfilling + Reinstatement																								
0530-3075	Bay 1 Construction	90	17-Jan-13	09-May-13	Bay 1 Construction																								
0530-3255	1500 dia. Storm Drain - Construct Manhole (S95 to S99)	0	20-Oct-12 A	03-Nov-12 A	1500 dia. Storm Drain - Construct Manhole (S95 to S99)																								
0530-3324	1500 dia. Storm Drain - Backfill + Extract Sheetpiles (S95 to S99)	0	05-Nov-12 A	15-Nov-12 A	1500 dia. Storm Drain - Backfill + Extract Sheetpiles (S95 to S99)																								
0530-3300	1500 dia. Storm Drain - Sheetpiles + ELS (S89 to S94)	0	17-Sep-12 A	31-Oct-12 A	1500 dia. Storm Drain - Sheetpiles + ELS (S89 to S94)																								
0530-3302	1500 dia. Storm Drain - Laying of Pipe (S89 to S94)	0	01-Nov-12 A	07-Nov-12 A	1500 dia. Storm Drain - Laying of Pipe (S89 to S94)																								
0530-3305	1500 dia. Storm Drain - Construct Manhole (S89 to S94)	12	20-Nov-12	03-Dec-12	1500 dia. Storm Drain - Construct Manhole (S89 to S94)																								
0530-3308	1500 dia. Storm Drain - Backfill + Extract Sheetpiles (S89 to S94)	6	04-Dec-12	10-Dec-12	1500 dia. Storm Drain - Backfill + Extract Sheetpiles (S89 to S94)																								
0530-3310	1500 dia. Storm Drain - Sheetpiles + ELS (S83 to S89)	0	26-Sep-12 A	09-Nov-12 A	1500 dia. Storm Drain - Sheetpiles + ELS (S83 to S89)																								
0530-3325	1500 dia. Storm Drain - Laying of Pipe (S83 to S89)	2	09-Nov-12 A	21-Nov-12	1500 dia. Storm Drain - Laying of Pipe (S83 to S89)																								
0530-3326	1500 dia. Storm Drain - Construct Manhole (S83 to S89)	12	21-Nov-12	05-Dec-12	1500 dia. Storm Drain - Construct Manhole (S83 to S89)																								
0530-3327	1500 dia. Storm Drain - Backfill + Extract Sheetpiles (S83 to S89)	6	05-Dec-12	12-Dec-12	1500 dia. Storm Drain - Backfill + Extract Sheetpiles (S83 to S89)																								
0530-3338	1500 dia. Temp Steel Pipe - ELS	0	27-Sep-12 A	17-Nov-12 A	1500 dia. Temp Steel Pipe - ELS																								
0530-3348	1500 dia. Temp Steel Pipe - Pipe Laying	9	20-Nov-12	29-Nov-12	1500 dia. Temp Steel Pipe - Pipe Laying																								
0530-3358	1500 dia. Temp Steel Pipe - Connect to Existing Box Culvert	9	05-Nov-12 A	10-Dec-12	1500 dia. Temp Steel Pipe - Connect to Existing Box Culvert																								
0530-3328	Abandon Existing Drain Across Tunnel	6	11-Dec-12	17-Dec-12	Abandon Existing Drain Across Tunnel																								
06 - SECTION 3 OF THE WORKS																													
06.2 - Box Culvert U1																													
0620-2390	U1 Bay 6 to 8 Sheet Piles + ELS	4	30-Jul-12 A	23-Nov-12	U1 Bay 6 to 8 Sheet Piles + ELS																								
0620-2450	U1 Bay 9 and 10 Sheetpiles + ELS	6	13-Sep-12 A	26-Nov-12	U1 Bay 9 and 10 Sheetpiles + ELS																								
0620-2470	U1 Construct Bay 9	17	30-Oct-12 A	08-Dec-12	U1 Construct Bay 9																								
0620-2400	U1 Construct Bay 6	24	24-Nov-12	21-Dec-12	U1 Construct Bay 6																								
0620-2410	U1 Construct Bay 7	24	08-Dec-12	07-Jan-13	U1 Construct Bay 7																								
0620-2460	U1 Construct Bay 10	24	08-Dec-12	08-Jan-13	U1 Construct Bay 10																								
0620-2420	U1 Construct Bay 8	24	22-Dec-12	21-Jan-13	U1 Construct Bay 8																								
0620-2430	U1 Construct Bay 5	24	08-Jan-13	04-Feb-13	U1 Construct Bay 5																								
0620-2440	U1 Backfill Bay 5 to 8 + Extract Sheetpiles	18	05-Feb-13	28-Feb-13	U1 Backfill Bay 5 to 8 + Extract Sheetpiles																								
0620-2480	U1 Bay 11 and 12 Sheetpiles + ELS	18	07-Nov-12 A	10-Dec-12	U1 Bay 11 and 12 Sheetpiles + ELS																								
0620-2490	U1 Construct Bay 12	24	11-Dec-12	09-Jan-13	U1 Construct Bay 12																								
0620-2500	U1 Construct Bay 11	24	26-Dec-12	23-Jan-13	U1 Construct Bay 11																								
0620-2510	U1 Backfill Bay 11 and 12 + Extract Sheetpiles	12	24-Jan-13	06-Feb-13	U1 Backfill Bay 11 and 12 + Extract Sheetpiles																								
0620-2520	U1 Construct Bay 13 (Outfall)	48	24-Jan-13	23-Mar-13	U1 Construct Bay 13 (Outfall)																								
10 - SECTION X OF THE WORKS																													
10.1 - E/B Bridges (Bridge D, E and F)																													
10.1.1 - Marine Pier Construction																													
Pier F03 to F15																													
1011-1990	Dismantle Piling Platform at Pier F3	0	04-Oct-12 A	02-Nov-12 A	Dismantle Piling Platform at Pier F3																								

- Remaining Level of Effort
- Actual Level of Effort
- Actual Work
- Remaining Work
- Critical Remaining Work
- ◆ Milestone

Contract HY/2009/19

Three Month Rolling Programme (20 NOV 2012 to 19 FEB 2013)

3MRP

3MRP - NOV 2012 to FEB 2012

Page 3 of 6

Activity ID	Activity Name	Rem Dur	Start	Finish	2012												2013					
					November						December						January			February		
					22	29	05	12	19	26	03	10	17	24	31	07	14	21	28	04	11	18
1011-1995	Fabrication of Marine Pile Cap Cofferdam	9	04-Oct-12 A	29-Nov-12	Fabrication of Marine Pile Cap Cofferdam																	
1011-2150	F3 Pile Cap Construction	30	10-Nov-12 A	24-Dec-12	F3 Pile Cap Construction																	
1011-2160	F3 Pier/Column Construction	12	26-Dec-12	09-Jan-13	F3 Pier/Column Construction																	
1011-2170	F3 Crosshead Construction + Bearing	24	10-Jan-13	06-Feb-13	F3 Crosshead C																	
1011-2000	Dismantle Piling Platform at Pier F4	0	04-Oct-12 A	02-Nov-12 A	Dismantle Piling Platform at Pier F4																	
1011-2180	F4 Pile Cap Construction	30	16-Nov-12 A	24-Dec-12	F4 Pile Cap Construction																	
1011-2190	F4 Pier/Column Construction	12	26-Dec-12	09-Jan-13	F4 Pier/Column Construction																	
1011-2200	F4 Crosshead Construction + Bearing	24	10-Jan-13	06-Feb-13	F4 Crosshead C																	
1011-1810.50	Pier F5 Dolphin Socketed H-Pile 4	0	28-Sep-12 A	16-Nov-12 A	Pier F5 Dolphin Socketed H-Pile 4																	
1011-1810.60	Pier F5 Dolphin Socketed H-Pile 6	0	28-Sep-12 A	16-Nov-12 A	Pier F5 Dolphin Socketed H-Pile 6																	
1011-2010	Dismantle Piling Platform at Pier F5	18	20-Nov-12	10-Dec-12	Dismantle Piling Platform at Pier F5																	
1011-2015	F5 Preparation/Assembly of Cofferdam	12	11-Dec-12	24-Dec-12	F5 Preparation/Assembly of Cofferdam																	
1011-2210	F5 Pile Cap Construction	18	26-Dec-12	16-Jan-13	F5 Pile Cap Construction																	
1011-2220	F5 Pier/Column Construction	12	17-Jan-13	30-Jan-13	F5 Pier/Column Construct																	
1011-2230	F5 Crosshead Construction	24	31-Jan-13	02-Mar-13																		
1011-1790.20	Pier F6 Dolphin Socketed H-Pile 2	0	24-Aug-12 A	29-Oct-12 A	Pier F6 Dolphin Socketed H-Pile 2																	
1011-1790.30	Pier F6 Dolphin Socketed H-Pile 3	0	25-Aug-12 A	31-Oct-12 A	Pier F6 Dolphin Socketed H-Pile 3																	
1011-1790.50	Pier F6 Dolphin Socketed H-Pile 4	6	03-Nov-12 A	26-Nov-12	Pier F6 Dolphin Socketed H-Pile 4																	
1011-1790.60	Pier F6 Dolphin Socketed H-Pile 6	7	03-Nov-12 A	27-Nov-12	Pier F6 Dolphin Socketed H-Pile 6																	
1011-2020	F6 Dismantle Piling Platform	18	28-Nov-12	18-Dec-12	F6 Dismantle Piling Platform																	
1011-2965	F6 Preparation/Assembly of Cofferdam	12	19-Dec-12	03-Jan-13	F6 Preparation/Assembly of Cofferdam																	
1011-2240	F6 Pile Cap Construction	18	04-Jan-13	24-Jan-13	F6 Pile Cap Construction																	
1011-2250	F6 Pier/Column Construction	12	25-Jan-13	07-Feb-13	F6 Pier/Column																	
1011-2260	F6 Crosshead Construction	24	08-Feb-13	11-Mar-13																		
1011-1910.10	Pier F7 Dolphin Socketed H-Pile 1	0	20-Sep-12 A	05-Nov-12 A	Pier F7 Dolphin Socketed H-Pile 1																	
1011-1910.20	Pier F7 Dolphin Socketed H-Pile 2	0	20-Sep-12 A	03-Nov-12 A	Pier F7 Dolphin Socketed H-Pile 2																	
1011-1910.30	Pier F7 Dolphin Socketed H-Pile 3	0	27-Sep-12 A	06-Nov-12 A	Pier F7 Dolphin Socketed H-Pile 3																	
1011-1910.40	Pier F7 Dolphin Socketed H-Pile 5	0	27-Sep-12 A	08-Nov-12 A	Pier F7 Dolphin Socketed H-Pile 5																	
1011-1910.50	Pier F7 Dolphin Socketed H-Pile 4	18	26-Nov-12	15-Dec-12	Pier F7 Dolphin Socketed H-Pile 4																	
1011-1910.60	Pier F7 Dolphin Socketed H-Pile 6	18	28-Nov-12	18-Dec-12	Pier F7 Dolphin Socketed H-Pile 6																	
1011-2030	F7 Dismantle Piling Platform	18	19-Dec-12	10-Jan-13	F7 Dismantle Piling Platform																	
1011-2035	F7 Preparation/Assembly of Cofferdam	12	11-Jan-13	24-Jan-13	F7 Preparation/Assembly of Coffe																	
1011-2270	F7 Pile Cap Construction	18	25-Jan-13	18-Feb-13																		
1011-1862.14	Pier F8 Dolphin Socketed H-Pile 4	5	17-Oct-12 A	24-Nov-12	Pier F8 Dolphin Socketed H-Pile 4																	
1011-1862.15	Pier F8 Dolphin Socketed H-Pile 6	6	16-Oct-12 A	26-Nov-12	Pier F8 Dolphin Socketed H-Pile 6																	
1011-2040	F8 Dismantle Piling Platform	18	19-Dec-12	10-Jan-13	F8 Dismantle Piling Platform																	
1011-2045	F8 Preparation/Assembly of Cofferdam	12	11-Jan-13	24-Jan-13	F8 Preparation/Assembly of Coffe																	
1011-2300	F8 Pile Cap Construction	18	25-Jan-13	18-Feb-13																		
1011-2120	Marine bored pile testing F9	0	25-Jul-12 A	26-Oct-12 A	Marine bored pile testing F9																	
1011-0802.5	Pier F9 Dolphin Socketed H-Pile P5	7	08-Oct-12 A	27-Nov-12	Pier F9 Dolphin Socketed H-Pile P5																	
1011-1802.1	Pier F9 Dolphin Socketed H-Pile P1	9	27-Oct-12 A	29-Nov-12	Pier F9 Dolphin Socketed H-Pile P1																	
1011-1802.2	Pier F9 Dolphin Socketed H-Pile P2	11	09-Oct-12 A	01-Dec-12	Pier F9 Dolphin Socketed H-Pile P2																	
1011-1802.3	Pier F9 Dolphin Socketed H-Pile P3	13	08-Oct-12 A	04-Dec-12	Pier F9 Dolphin Socketed H-Pile P3																	
1011-0802.4	Pier F9 Dolphin Socketed H-Pile P4	18	05-Dec-12	26-Dec-12	Pier F9 Dolphin Socketed H-Pile P4																	

- Remaining Level of Effort
- Actual Level of Effort
- Actual Work
- Remaining Work
- Critical Remaining Work
- ◆ Milestone

Contract HY/2009/19

Three Month Rolling Programme (20 NOV 2012 to 19 FEB 2013)

3MRP

3MRP - NOV 2012 to FEB 2012

Activity ID	Activity Name	Rem Dur	Start	Finish	2012												2013					
					November						December						January				February	
					22	29	05	12	19	26	03	10	17	24	31	07	14	21	28	04	11	18
1011-2950	Dolphin socketed H-pile pier F2-P3	10	27-Oct-12 A	30-Nov-12	Dolphin socketed H-pile pier F2-P3																	
1011-2955	F2 Dismantle Piling Platform	24	08-Dec-12	07-Jan-13	F2 Dismantle Piling Platform																	
1011-2800	F2A Pile Cap Construction	24	08-Jan-13	04-Feb-13	F2A Pile Cap Construction																	
1011-2810	F2A Pier/Column Construction	12	05-Feb-13	21-Feb-13	F2A Pier/Column Construction																	
1011-2830	F2B Pile Cap Construction	18	05-Feb-13	28-Feb-13	F2B Pile Cap Construction																	
1011-2900	F1B Pier/Column Construction	12	06-Feb-13	22-Feb-13	F1B Pier/Column Construction																	
10.1.2 - Land Pier Construction																						
Abutment D12																						
1012-1220	Abutment D12 construction (E/B Bridge)	15	03-Oct-12 A	06-Dec-12	Abutment D12 construction (E/B Bridge)																	
1012-1240	Bearing installation (D12) at III (E/B)	6	07-Dec-12	13-Dec-12	Bearing installation (D12) at III (E/B)																	
Pier D08 to D11																						
1012-1100	Pier D08 Construct Pile Cap	20	17-Sep-12 A	13-Dec-12	Pier D08 Construct Pile Cap																	
1012-1110	Pier D08 Construct Pier/Column	9	13-Dec-12	24-Dec-12	Pier D08 Construct Pier/Column																	
1012-1120	Pier D08 Construct Crosshead + Bearing	24	24-Dec-12	23-Jan-13	Pier D08 Construct Crosshead + Bearing																	
1012-1150	Pier D09 Construct Crosshead + Bearing	24	20-Nov-12	17-Dec-12	Pier D09 Construct Crosshead + Bearing																	
1012-1170	Pier D10 Construct Pier/Column	18	20-Nov-12	10-Dec-12	Pier D10 Construct Pier/Column																	
1012-1180	Pier D10 Construct Crosshead + Bearing	24	18-Dec-12	16-Jan-13	Pier D10 Construct Crosshead + Bearing																	
1012-1210	Pier D11 Construct Crosshead	2	01-Nov-12 A	21-Nov-12	Pier D11 Construct Crosshead																	
Pier D05 to D07																						
1012-1290.20	Pier D05 Bored Pile D05-1	12	20-Dec-12	04-Jan-13	Pier D05 Bored Pile D05-1																	
1012-1300	Pier D05 Bored Piles Testing	18	05-Jan-13	25-Jan-13	Pier D05 Bored Piles Testing																	
1012-1310	Pier D06 Construct Pile Cap	18	26-Jan-13	19-Feb-13	Pier D06 Construct Pile Cap																	
10.1.3 - E/B Bridge Construction																						
Bridge D3																						
1013-1000.20	Segment and Beam Launching Girder - Submit Design	0	14-May-12 A	19-Nov-12 A	Segment and Beam Launching Girder - Submit Design																	
1013-1010	Segment and Beam Launching Girder - Fabrication	60	05-Nov-12 A	30-Jan-13	Segment and Beam Launching Girder - Fabrication																	
1013-1012	Segment and Beam Launching Girder - Off-Site launching Trial	12	31-Jan-13	16-Feb-13	Segment and Beam Launching Girder - Off-Site launching Trial																	

- Remaining Level of Effort
- Actual Level of Effort
- Actual Work
- Remaining Work
- Critical Remaining Work
- ◆ Milestone

Contract HY/2009/19

Three Month Rolling Programme (20 NOV 2012 to 19 FEB 2013)

3MRP

3MRP - NOV 2012 to FEB 2012

Page 6 of 6